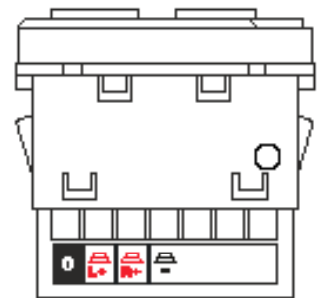


1 – pu:
BL
Mu
6 – SL
oui



DESCRIPTION

FM stereo control / tuner, with 1 stereo channel and message receipt. Infrared receiver, controlled by P4803 or P4804 remote control (optional). Permits storing up to 30 stations with functions: message receipt, super-bass, sleep, adjustment of bass, treble, balance and ideal sound.

GENERAL CHARACTERISTICS

- Electronic ON / OFF switch.
- ON /Sleep/ Sb luminous indicator, bicolour LED type.
- Key depression luminous indication (Vol+, Vol- and SCAN)
- 52-step digital volume control with selected position memory. Integrated audio processor.
- Superbass.
- SCAN function (change radio station of tuner or external device)
- Selection of external music channel, internal tuner or BLUETOOTH receiver, with light indicating selected audio source.
- Voltage telecontrol.
- External channel input (walkman).
- Direct access to stations via control P4804.
- Jumper for selection of mono output. For this type of installations place the jumper M/S (10).

DIRECT ACCESS FUNCTIONS ON CONTROL PCP1273

With control on, we press key (4) to change channel (Main Unit/Tuner/ BLUETOOTH) until the LED indicator (5) lights up in Red, (FM).

STATION STORING AND DELETING:

1 - AUTOSEARCH AND AUTOMATIC STATIONS STORING M1 TO M30:

If you wish to store all the available memories automatically, then **(IN OFF MODE):**

- Keep Scan key (9) pressed for several seconds (with max. Sensibility preset)
- The number of stored stations will depend on the reception level of the installation

2 - SEARCH AND STORE OF STATIONS MANUALLY

If you wish to store stations one by one, then **(IN ON MODE):**

- Keep channel key (8) until the LED ON is switched off, then press key (1) Vol+ to store in the following free memory.

3 MEMORY ERASING: (IN ON AND TUNER MODE)

- Long press of channel/tuner key (8) until led on (6) turns off, secondly press key Vol+ (1) to store in the following free memory.

WORKING IN ON AND TUNER MODE:

1 - MEMORY SCAN:

With a short press on scan key (9), only the memories previously stored will be selected. The led (6) will flash once.

2 - AUTOMATIC STATION SEARCH BY FREQUENCY SCAN:

With a long press of scan key (9), the tuner will continue on the dial until a station is detected. The led ON (6) will turn off until the scan is finished.

BLUETOOTH FUNCTIONS

When the control is switched on, LED (6) will light up in red and LED (5) in blue; a noise will be heard in the speakers telling us that the control has been activated and the BLUETOOTH visible. The control will then go to the same position it was in when last turned off: Main Unit, Tuner or Bluetooth.

Activate the BLUETOOTH on the device (telephone, tablet, laptop, etc.), and search for new devices. The name, SONECO, must appear. If the device asks us for a password, enter code 1234.

Once the connection has been established, we can send all the audio from our device to control PCP1273.

Every time we switch off the unit, the Bluetooth will disconnect.

SONELCO has an APP for mobile devices (Telephone, Tablet, iPad,...) from which we can control all the parameters of control PCP1273. Change channel, increase and decrease volume, memorise stations, frequency and memory scan, access our music and even music on the Internet (YouTube, Spotify,...).

When you quit the app, the control will be decoupled.

TECHNICAL CHARACTERISTICS

Power supply voltage: 16VDC
 Maximum consumption: 420 mA
 Standby consumption: 30 mA
 Rated output power: 1+1W RMS
 Output impedance: 8 Ohm
 Maximum output power: 1.5+1.5W RMS
 Distortion < 1%
 Maximum output current (Terminal 3): 1 A
 Frequency response: 80Hz-21KHz (-3dB)
 Signal/noise ratio: >87 dB
 Input sensitivity (Terminals 15,16): 1.45 V
 Crosstalk noise: 40 dB

TUNER

Antenna connector input: 75 Ohm
 Reception frequency: 87.50 MHz – 108.00 MHz
 Input sensitivity: 2 µV
 Programmable search sensitivity: 4 different levels

THE BLUETOOTH

Bluetooth version: 3.0
 Distance from Bluetooth: 8 m.
 Password: 1234

CONNECTION

Before proceeding to make the connection make sure that the power supply unit is off. Insert the control in the metal frame and make the connection according to the following instructions:

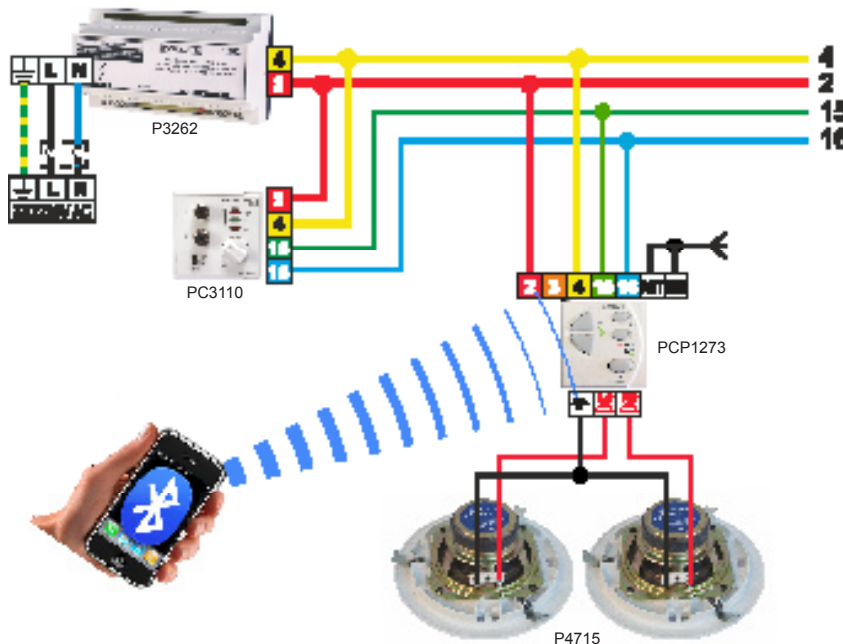
TERMINALS:

- 0 - SCAN – Only in AUX mode (output)
- 2 - Input +16V power supply
- 3 - Output +16V after the switch
- 4 - Ground
- 15 - Left channel audio input and power supply source telecontrol.
- 16 - Right channel audio input
- 7 - Message audio input
- 8 - Zone selection input. Connect with relative zone wire Zx (in case of messages by zones)
- 9R - General call input.
- L+ - Output for left speaker
- R+ - Output for right speaker
- - Common ground for speakers
- ANT - FM external antenna input
- GND - Antenna ground

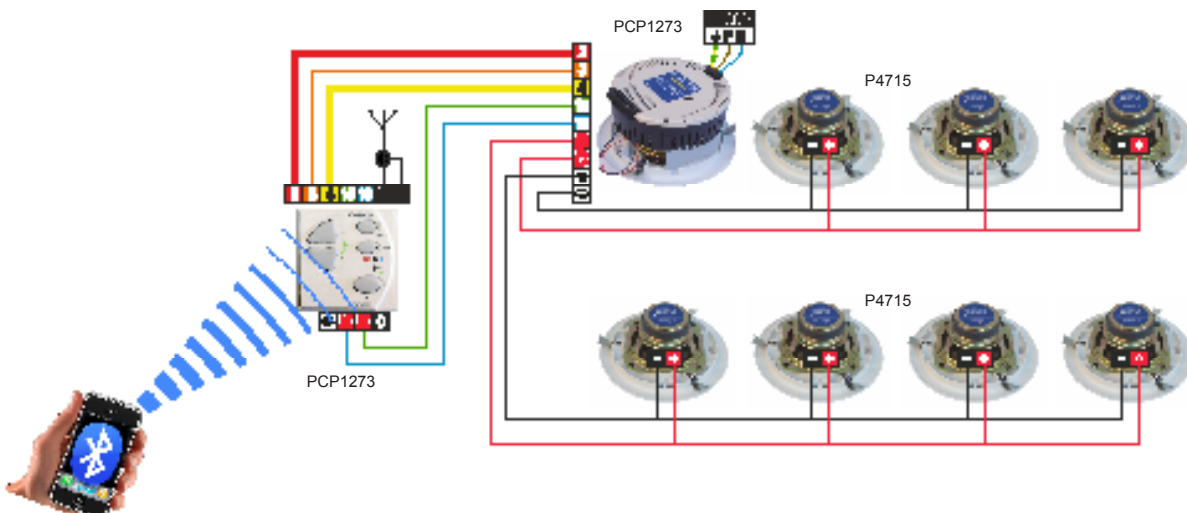
NOTE: The system must be wired up separately from the mains, according to regulations

INSTALLATION EXAMPLE

SYSTEM INTEGRATION WITH MOST AREAS



INDEPENDENT SYSTEM



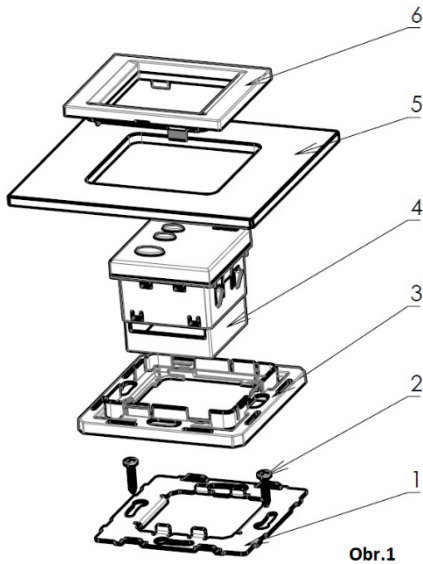
ASSEMBLY RECOMMENDATIONS: All the modules of the “COMPACT” series can be placed on different types of flushmount boxes, for which we have several types of front frames, which are supplied separately. For further details, see www.sonelco.com

Instructions for installation of bluetooth

Safety during installation

The installation must be performed by a person properly qualified in electrical engineering. Before commencing the installation, always disconnect mains voltage.

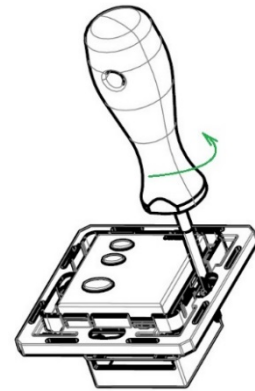
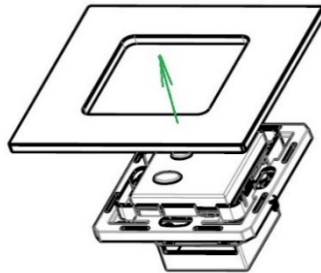
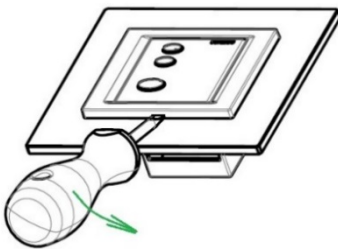
During installation of the bluetooth, the following conditions must be observed:



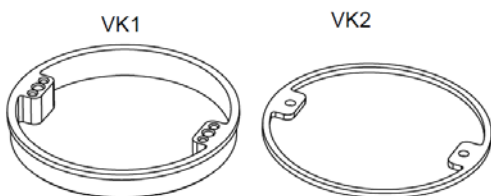
- The bluetooth mounting box must be placed flush with the plaster.
- In case of problems with a “sunk” mounting box, the VK1 or VK2 spacer (distance) rings must be used in order to prevent deformation of the fittings when the screws are tightened.
- The switch is fastened in the mounting box through a sheet-metal frame by means of two screws of 3 mm diameter (Fig.1,2).
- Position the frame correctly, see Fig. 2, lugs marked with arrows
- To install multiple fitting assemblies, it is necessary to use multiple boxes with the spacing of centres of 71 mm.
- It is recommended to place the bluetooth in the mounting boxes at the approximate depth of 40 mm.
- Plastic base segment, pos. 3, snap on the sheet metal frame
- In the bluetooth switch, pos. 4, strip insulation and connect the wires according to the wiring diagram. Then insert the bluetooth unit in the base segment, pos. 3, together with the sheet metal frame, pos. 2, until the bluetooth is locked with the lugs positioned on the sides.

- Put the frame, pos. 5 (wood, metal, plastic, etc.) on the base segment, pos. 3
- Finally, fit the visible component - intermediate frame, pos. 6

Disassembly of bluetooth



- Use a flat screwdriver and slide the intermediate frame out carefully
- Then remove the frame
- Finally, remove the complete bluetooth device using the screwdriver.



The product contains no hazardous substances; after expiration of its service life, it must be handled in conformity with the waste act in force or pertinent related regulations.