

# O3ZOR

Czech manufacturer  
of VSN and VSR cam  
switch series



tradition since 1965

suitable for safe disconnection

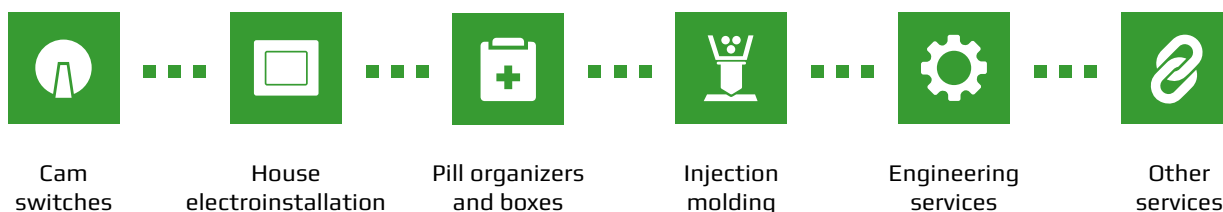
## OBZOR Zlin ... within reach since 1965

The Production Cooperative was established **sixty years** ago. During this time, OBZOR Zlin has ranked among the leading producers and distributors of small electro-mechanical products, automotive parts, metal parts, injection-moulded plastic parts and gasket components.

Following the transfer of cam switch production from the national company SVA in Kutna Hora followed by purchase of license for French **BACO cam switches** in 1970, the company expanded with developers, toolmakers, designers and other professionals. In 1972, OBZOR started the production of its own VS series of cam switches. The biggest customers were national company ROMO Fulnek and TATRAMAT Poprad. Since 1995, OBZOR became an **exclusive representative** of Austrian cam switch producer **Kraus + Naimer** (6 - 2000 A) for Czech Republic and Slovakia. In 2009, the original VS series were upgraded and replaced by a new range of VSN 10 A - 150 A and VSR 10 A - 20 A. Since 2014, VSN series expanded to 250 A. All OBZOR cam switches comply with the EN 60947-3 standard, Art. 2.3, for safe disconnection and can therefore also be used as disconnectors (This function is indicated both on the switch body and on the front label).

At present, the Cooperative operates production plants in Zlin, Uherske Hradiste and Olomouc, together employing approximately **220 workers**. Company's portfolio also includes **pill organizers and dental boxes**. Since 2003, OBZOR has also been producing household switches and sockets.

Our goal is to constantly improve the quality of products. Therefore, in 1997, OBZOR obtained quality system certification according to DIN EN ISO 9001:1995, followed in 2000 by certification according to DIN EN ISO 9002. Currently the company holds certifications according to DIN EN ISO 9001:2016 and ISO 14001:2016.





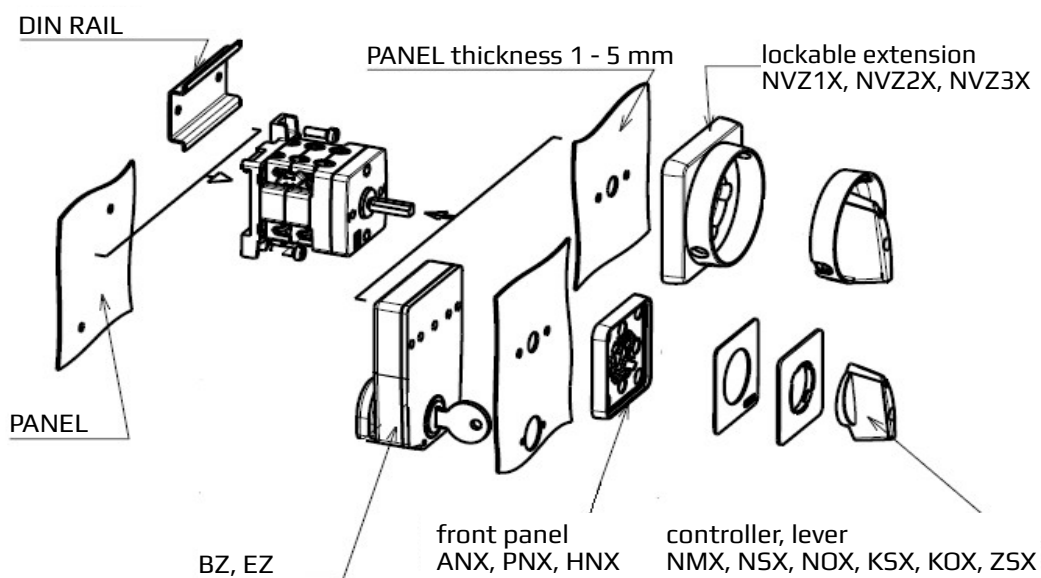


<b>V</b>	<b>S</b>	<b>N</b>	-	<b>X</b>	<b>X</b>	<b>X</b>	<b>X</b>	<b>X</b>	<b>X</b>	<b>X</b>	<b>X</b>	<b>X</b>	<b>A</b>	<b>X</b>	-	<b>V</b>	-	<b>X</b>	<b>X</b>	<b>X</b>
----------	----------	----------	---	----------	----------	----------	----------	----------	----------	----------	----------	----------	----------	----------	---	----------	---	----------	----------	----------

amperage (type series)	-	switching diagram + angle (switching program)	-	mounting method	-	front panel
------------------------	---	--	---	-----------------	---	-------------

<p><b>VSR 10</b></p> <p><b>VSR 16</b></p> <p><b>VSR 20</b></p> <p><b>VSN 10</b></p> <p><b>VSN 16</b></p> <p><b>VSN 20</b></p> <p><b>VSN 25</b></p> <p><b>VSN 32</b></p> <p><b>VSN 40</b></p> <p><b>VSN 63</b></p> <p><b>VSN 75</b></p> <p><b>VSN 80</b></p> <p><b>VSN 100</b></p> <p><b>VSN 125</b></p> <p><b>VSN 150</b></p> <p><b>VSN 250</b></p>	<p><b>XXXX</b> 4-digit scheme is for standard types according to catalogue (chosen by customer)</p> <p><b>XXXXXXXX</b> 8-digit scheme is assigned by manufacturer, <b>used for custom made switch schemes.</b></p> <p><b>AX</b> Switching angle is a variable value chosen by customer from scheme list.</p>	<p><b>V</b> built-in, panel mounted</p> <p><b>*Z</b> back mounting, using screws or DIN rail</p> <p><b>V22</b> central mounting in a 22,5mm diameter hole, switch controlled by: - controller (lever) - key</p>	<p><b>ANC</b> small front panel 50x50 (black)</p> <p><b>ANZ</b> small front panel 50x50 (yellow)</p> <p><b>PNC</b> medium front panel 66x66 (black)</p> <p><b>PNZ</b> medium front panel 66x66 (yellow)</p> <p><b>HNC</b> large front panel 84x84 (black)</p> <p><b>HNZ</b> large front panel 84x84 (yellow)</p>
---	--	---	--

\*switches in K1, K2, SKN and SKV covers are always designed for back mounting - Z



The difference between VSR (10-16-20) and VSN (10-16-20) switches lies in the orientation of the connection terminals on the switch body and the access to them.

VSR series have access to the connection screw heads from the right and left, perpendicular to the longitudinal axis of the switch.

VSN series have access to the connection screw heads from the top and bottom at a 45° angle to the longitudinal axis of the switch.

**Technical support:**

Tel.: +420 577 195 138, e-mail: ots@obzor.cz

-	<b>S</b>	X	X	X	-	X	X	X	-	X	X	X	X	X	-
---	----------	---	---	---	---	---	---	---	---	---	---	---	---	---	---

-	<b>label designation</b>	-	<b>controller</b>	-	<b>accessories</b>	-	<b>covers</b>
---	--------------------------	---	-------------------	---	--------------------	---	---------------

**S001-999**  
defined by producer  
- label designation according to switch position

**SPEC**  
defined by customer  
- custom label designation

**NMR**  
arrow small red

**NMS**  
arrow small grey

**NMC**  
arrow small black

**NSR**  
arrow mid-size red

**NSS**  
arrow mid-size grey

**NSC**  
arrow mid-size black

**NOR**  
arrow large red

**NOS**  
arrow large grey

**NOC**  
arrow large black

**KSR**  
lever mid-size red

**KSS**  
lever mid-size grey

**KSC**  
lever mid-size black

**KOR**  
lever large red

**KOS**  
lever large grey

**KOC**  
lever large black

**ZSR**  
lockable arrow red

**ZSS**  
lockable arrow grey

**ZSC**  
lockable arrow

**LOCKABLE EXTENSION**

**NVZ1R**  
mid-size 66x66 for VSN(R) 10-20 red controller

**NVZ1S**  
mid-size 66x66 for VSN(R) 10-20 grey controller

**NVZ1C**  
mid-size 66x66 for VSN(R) 10-20 black controller

**NVZ3R**  
mid-size 66x66 for VSN(R) 25-150 red controller

**NVZ3S**  
mid-size 66x66 for VSN(R) 25-150 grey controller

**NVZ3C**  
mid-size 66x66 for VSN(R) 25-150 black controller

**NVZ2R**  
large 84x84 for VSN 25-150 red controller

**NVZ2S**  
large 84x84 for VSN 25-150 grey controller

**NVZ2C**  
large 84x84 for VSN 25-150 black controller

**BZ** - block lock, key can be pulled out only in locked position

**EZ** - block lock, key can be pulled out also in opened position

**REVERSIBLE MECHANISM for VSN(R) 10-20**

**R21, R81, R812, R78, R32, R78, R32, R7832, R8132, R7821**

**UNIDIRECTIONAL ROTATION**

**JO** - for VSN 10-20

**SPLIT CONTROL**

**DO** - for VSN(R) 10-150

**E** - switches mounted in parallel

**T** - switches mounted in series

**OK4**  
VSR 10-20 up to 4 levels

**OK6**  
VSR 10-20 up to 6 levels

**OKV**  
VSR 10-20 up to 6 levels

**K1CS**  
VSN 10-20 up to 4 levels

**K1DM**  
VSN 10-20 up to 3 levels

**K1DV**  
VSN 10-20 up to 6 levels

**K2CM**  
VSN 25-75 up to 2 levels

**K2CS**  
VSN 25-75 up to 4 levels

**K2CV**  
VSN 25-75 up to 6 levels

**K2DM**  
VSN 25-75 up to 3 levels

**K2DV**  
VSN 25-75 up to 6 levels

**SKN**  
VSN 80-150 up to 4 levels

**SKV**  
VSN 250

**K2J**  
cover with circuit breaker VSN 10-75

**K2P**  
cover with fuse switch VSN 10-32

**K2PB0**  
cover with hole for fuse switch VSN 10-75

**K2Z**  
cover with socket (4 or 5 pin) VSN 10-32

**K2R**  
cover with inlet (4 of 5 pin) VSN 10-32

**K2XXSG**  
cover with indicator

**NOTE:**  
Covers supplied with/without PG outlets.



## CAM SWITCHES

for safe disconnection according to CSN EN 60947-3 article 2.3

10 A

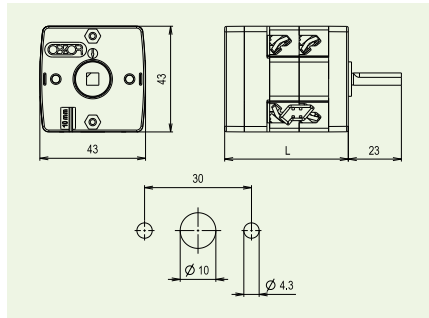
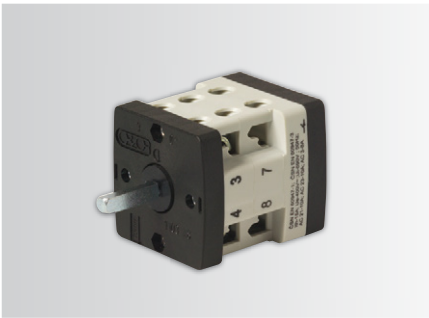
16 A

20 A





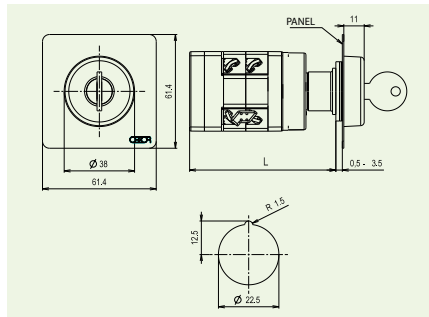
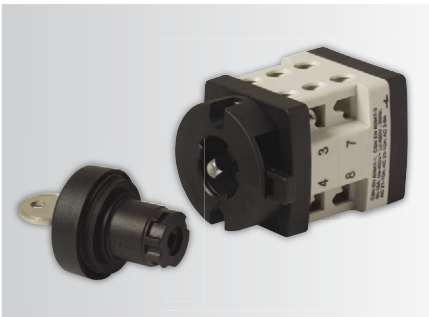
## Cam switches, front mounted (embedded)



Number of levels	Number of switching systems	Length L (mm)
1	1 - 2	38,3
2	3 - 4	50,3
3	5 - 6	62,3
4	7 - 8	74,3
5	9 - 10	86,3
6	11 - 12	98,3
7	13 - 14	110,3
8	15 - 16	122,3
9	17 - 18	134,3
10	19 - 20	146,3
11	21 - 22	158,3
12	23 - 24	170,3

Length of the control shaft can be extended at customer's discretion in 12 mm sections.

## Cam switches, central mounted



Note: with key control, the switches can be applied only up to 4 levels.

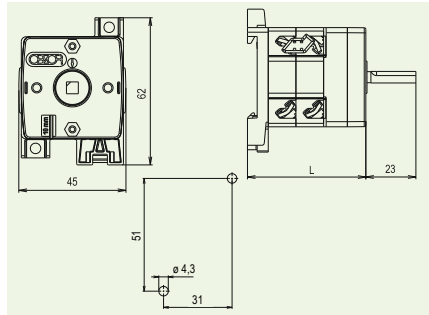
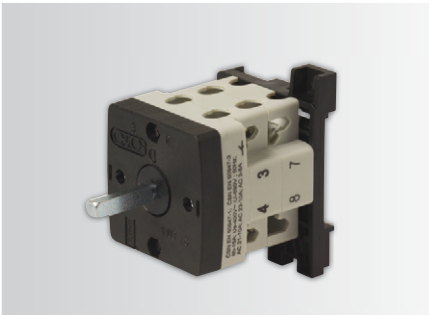
Number of levels	Number of switching systems	Length L (mm)
1	1 - 2	67
2	3 - 4	79
3	5 - 6	91
4	7 - 8	103
5	9 - 10	115
6	11 - 12	127
7	13 - 14	139
8	15 - 16	151
9	17 - 18	163
10	19 - 20	175
11	21 - 22	187
12	23 - 24	194

VSR 10-16-20 switches with central mounting to the opening with diameter of 22.5 mm are available in two models:

- with key control
- with arrow control

Key controlled switches - key can be removed in all positions when switching angle equals to 45° and 90°.

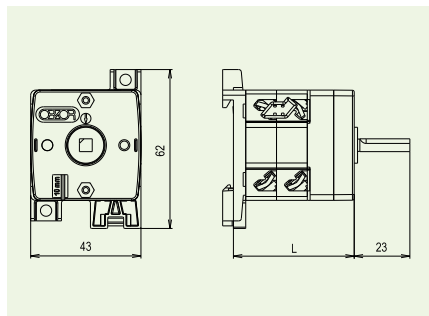
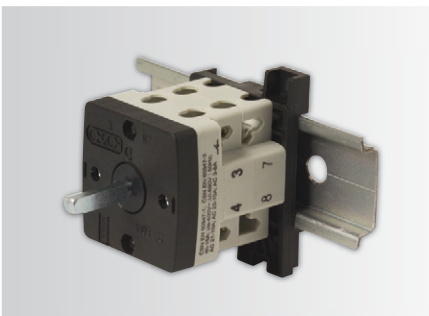
## Cam switches, back mounted using screws



Number of levels	Number of switching systems	Length L (mm)
1	1 - 2	39,3
2	3 - 4	51,3
3	5 - 6	63,3
4	7 - 8	75,3
5	9 - 10	87,3
6	11 - 12	99,3
7	13 - 14	111,3
8	15 - 16	123,3
9	17 - 18	135,3
10	19 - 20	147,3
11	21 - 22	159,3
12	23 - 24	171,3

Length of the control shaft can be extended at customer's discretion in 12 mm sections.

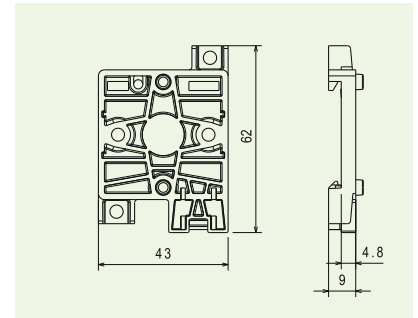
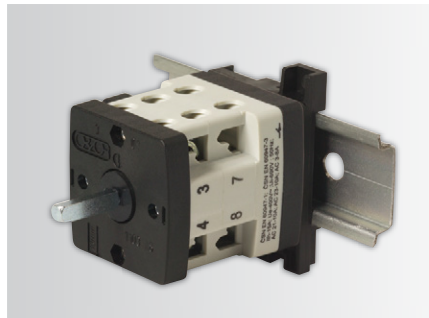
## Cam switches, back mounted on DIN batten



Number of levels	Number of switching systems	Length L (mm)
1	1 - 2	35,1
2	3 - 4	47,1
3	5 - 6	59,1
4	7 - 8	71,1
5	9 - 10	83,1
6	11 - 12	95,1
7	13 - 14	107,1
8	15 - 16	119,1
9	17 - 18	131,1
10	19 - 20	143,1
11	21 - 22	155,1
12	23 - 24	167,1

With the back mounted extension, VSN can be fixed using screws or to the batten of 35 × 7,5 mm according to DIN EN 50022. Length of the control shaft can be extended at customer's discretion in 12 mm sections.

## Back mounting panel for pro VSN 10 - 16 - 20



Universal model for both mounting using screws and on a DIN batten.

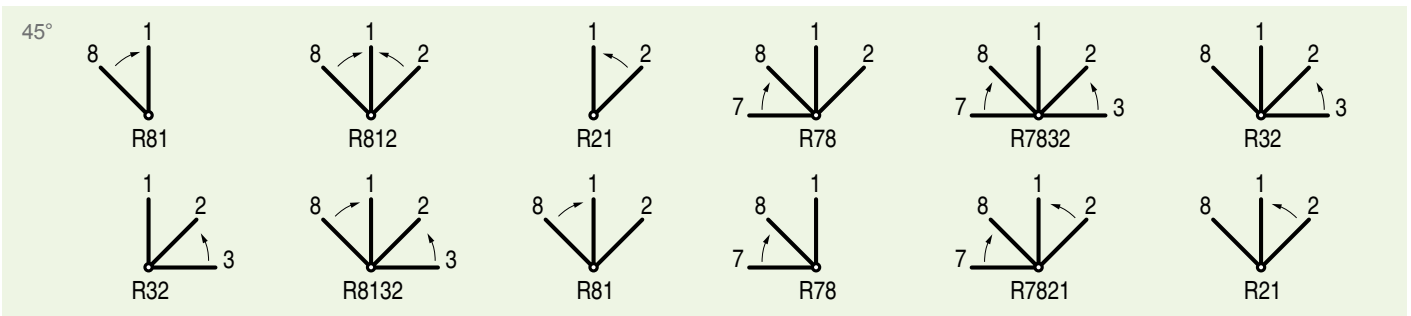
## One-way turning cam switches - JO type



One-way turning can be carried out only for VSN 10-16-20 under the switching angle of 45° a 90° with front or back mouting.

The device prevents reverse turning of the switch. Length of the switch is increased by 12 mm.

## Automatic reverse movement cam switches - R-type



VSN 10 - 16 - 20 cam switch can be fitted with automatic reverse movement device (for pulse switching).

Automatic reverse movement can be applied to switches up to 4 switching levels, i. e. 8 switching circuits. Other applications should be consulted with the manufacturer.

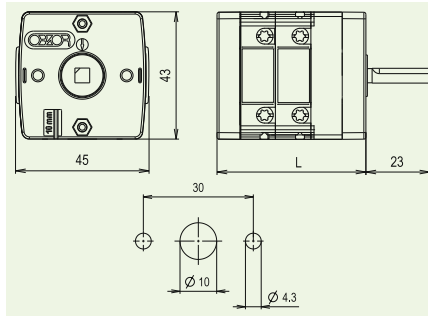
R81 identification defines automatic reverse movement from position 8 to position 1. R812 identification indicates automatic reverse movement from position 8 to position 1 and from position 2 to position 1.

Reverse positions are marked with arrows, all other positions are locked.

Length of the switch L is increased by 12 mm.



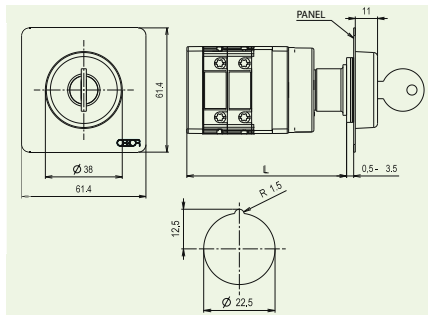
### Cam switches, front mounted (embedded)



Number of levels	Number of switching systems	Length L (mm)
1	1 - 2	34,5
2	3 - 4	46,5
3	5 - 6	58,5
4	7 - 8	70,5
5	9 - 10	82,5
6	11 - 12	94,5
7	13 - 14	106,5
8	15 - 16	118,5
9	17 - 18	130,5
10	19 - 20	142,5
11	21 - 22	154,5
12	23 - 24	166,5

Length of the control shaft can be extended at customer's discretion in 12mm sections.

### Cam switches, central mounted



Note: with key control, the switches can be applied only up to 4 levels.

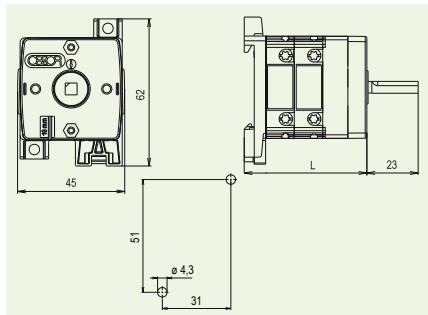
Number of levels	Number of switching systems	Length L (mm)
1	1 - 2	67
2	3 - 4	79
3	5 - 6	91
4	7 - 8	103
5	9 - 10	115
6	11 - 12	127
7	13 - 14	139
8	15 - 16	151
9	17 - 18	163
10	19 - 20	175
11	21 - 22	187
12	23 - 24	194

VSR 10-16-20 switches with central mounting to the opening with diameter of 22.5 mm are available in two models:

- with key control
- with arrow control

Key controlled switches - key can be removed in all positions when switching angle equals to 45° and 90°.

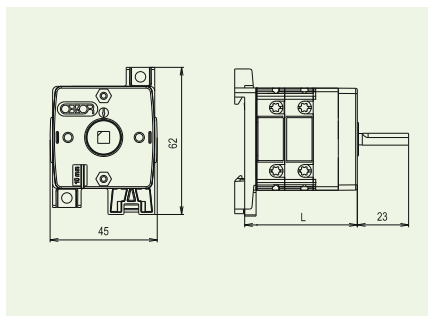
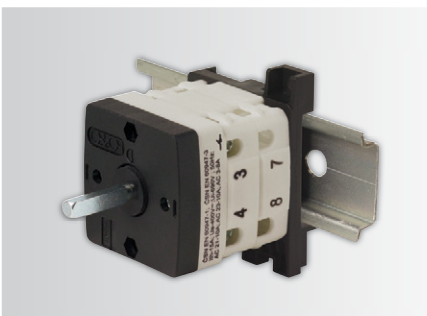
### Cam switches, back mounted using screws



Number of levels	Number of switching systems	Length L (mm)
1	1 - 2	39,3
2	3 - 4	51,3
3	5 - 6	63,3
4	7 - 8	75,3
5	9 - 10	87,3
6	11 - 12	99,3
7	13 - 14	111,3
8	15 - 16	123,3
9	17 - 18	135,3
10	19 - 20	147,3
11	21 - 22	159,3
12	23 - 24	171,3

Length of the control shaft can be extended at customer's discretion in 12 mm sections..

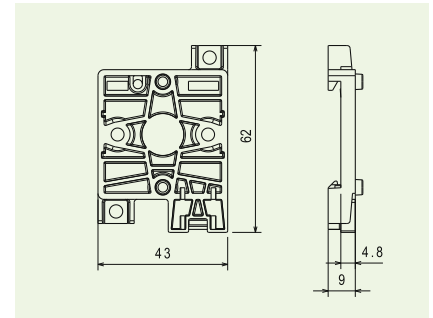
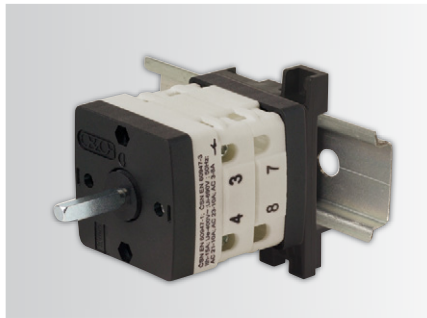
### Cam switches, back mounted on DIN batten



Number of levels	Number of switching systems	Length L (mm)
1	1 - 2	35,1
2	3 - 4	47,1
3	5 - 6	59,1
4	7 - 8	71,1
5	9 - 10	83,1
6	11 - 12	95,1
7	13 - 14	107,1
8	15 - 16	119,1
9	17 - 18	131,1
10	19 - 20	143,1
11	21 - 22	155,1
12	23 - 24	167,1

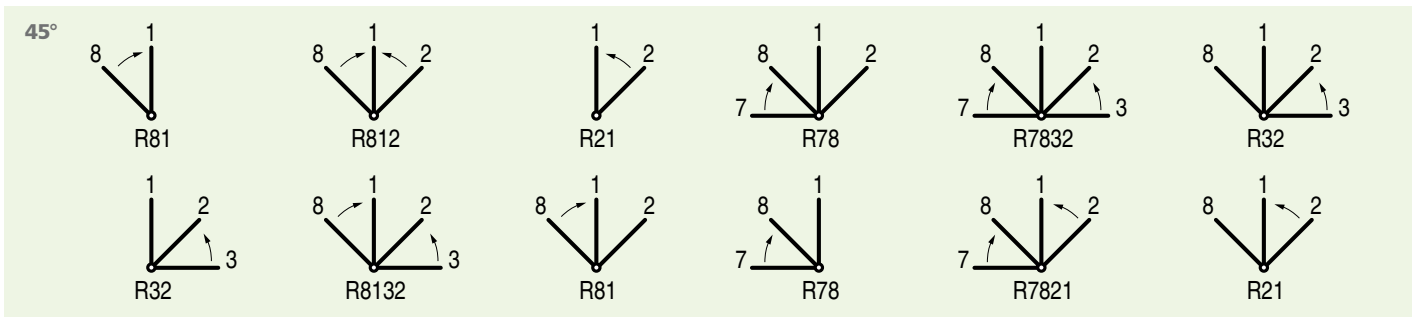
With the back mounted extension, VSR can be fixed using screws or to the batten of 35 × 7,5 mm according to DIN EN 50022. Length of the control shaft can be extended at customer's discretion in 12 mm sections.

## Back mounting panel for VSR 10 - 16 - 20



Universal model for both mounting using screws and on a DIN batten.

## Automatic reverse movement cam switches - R-type



VSN 10 - 16 - 20 cam switch can be fitted with automatic reverse movement device (for pulse switching).

Automatic reverse movement can be applied to switches up to 4 switching levels, i. e. 8 switching circuits. Other applications should be consulted with the manufacturer.

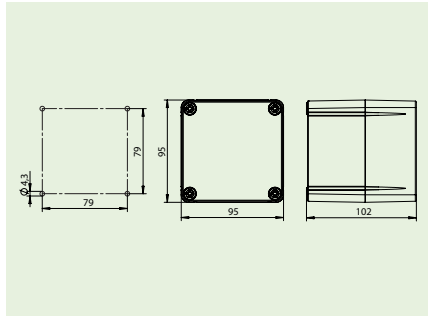
R81 identification defines automatic reverse movement from position 8 to position 1. R812 identification indicates automatic reverse movement from position 8 to position 1 and from position 2 to position 1.

Reverse positions are marked with arrows, all other positions are locked.

Length of the switch L is increased by 12 mm.



### Protection cover K1CS

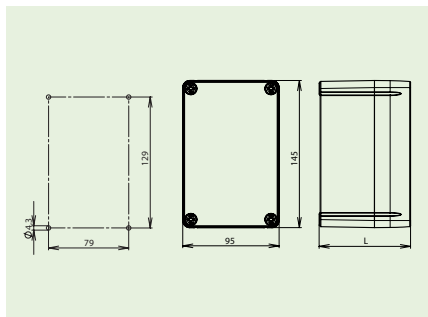


PROTECTION COVER VSN 10 - 16 - 20

K1CS for VSN 10 - 16 - 20  
up to max. 4 levels

- IP 65, installation on vertical surface
- for switches without additional devices (switch with indicator, block lock switches, ...)
- outlets placed in the upper and lower part of the cover (front view) max. 2 x PG 16 (1 x PG 21)
- cover fitted with N, PE conductors terminals
- plastic material - suitable also for mounting on materials of B, C1, C2 flammability grades

### Protection cover K1D



Cover	L (mm)
K1DM	90
K1DV	127

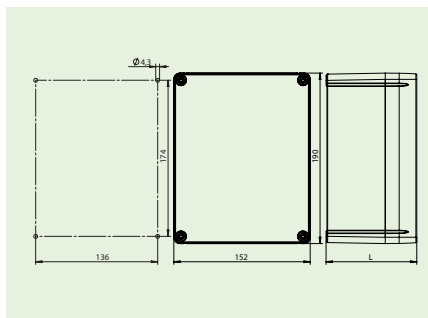
PROTECTION COVER VSN 10 - 16 - 20

Produced in two sizes:

1. K1DM for VSN 10 - 16 - 20 do max. 3 levels
2. K1DV for VSN 10 - 16 - 20 do max. 6 levels

- IP 65, installation on vertical surface
- for switches with addition
- outlets placed in the upper and lower part of the cover max. 2 x PG 16 (1 x PG 21)
- cover fitted with N, PE conductors terminals
- plastic material - suitable also for mounting on materials of B, C1, C2 flammability grades

### Protection cover K2D



Cover	L (mm)
K2DM	101
K2DV	168

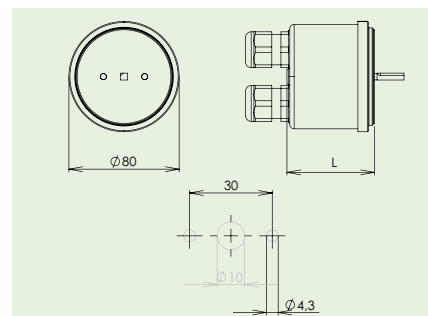
PROTECTION COVER VSN 10 - 16 - 20

Produced in two sizes:

1. K2DM for VSN 10 - 16 - 20 up to max. 4 levels
2. K2DV for VSN 10 - 16 - 20 up to max. 9 levels

- IP 65, installation on vertical surface
- for switches with additional devices (switch with indicator, block lock switches, ...)
- outlets placed in the upper and lower part of the cover (front view) max. 2 x PG 29
- cover fitted with N, PE conductors terminals
- plastic material - suitable also for mounting on materials of B, C1, C2 flammability grades

### Cylindrical protection cover OKV

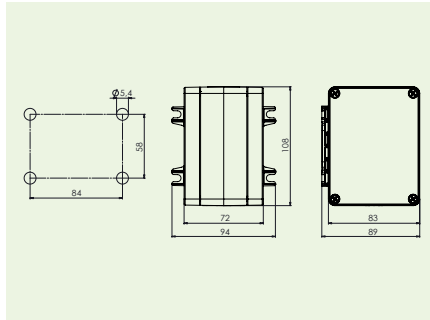


CYLINDRICAL PROTECTION COVER VSN 10 - 16 - 20

- IP 65, installation on vertical surface
- for switches without addition
- outlets placed in the back - 2x PG 16
- plastic material

Number of levels	Length L (mm)
1	68
2	80
3	92
4	104
5	116

### Protection cover OKN4

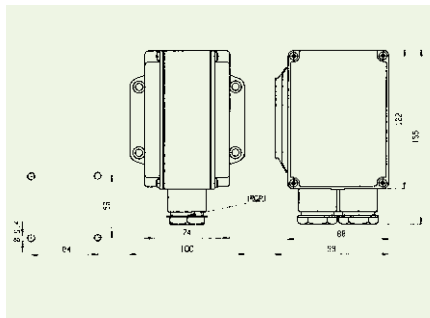
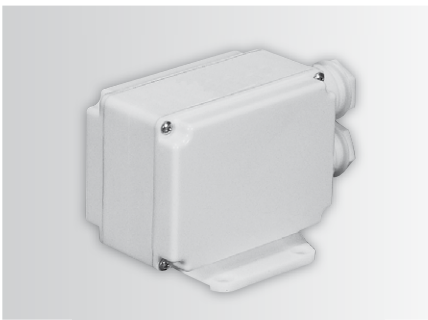


PROTECTION COVER VSN 10 - 16 - 20  
VSR 10 - 16 - 20

OKN4 for VSN (VSR) 10 - 16 - 20  
up to max. 4 levels

- IP 65, installation on horizontal surface
- outlets placed in the back - 2x PG 16
- cover fitted with N, PE conductors terminals
- plastic material, suitable also for mounting on B, C1, C2 (combustibility grade) materials

### Protection cover OK6



PROTECTION COVER VSN 10 - 16 - 20  
VSR 10 - 16 - 20

OK6 for VSN (VSR) 10 - 16 - 20  
up to max. 6 levels

- IP 54, installation on horizontal surface
- 2 x PG 21 outlets, standardly embedded on the back of the cover
- cover fitted with N, PE conductors terminals
- for switches with additional devices (block lock switches, max. up to 2 levels, cover fitted for vertical surface installation, outlets placed in the bottom of the cover)
- plastic material



ZEMNÍ SPÓJENÍ

MULTRIPLEX

HLAVNÍ VYPÍNAČ

## CAM SWITCHES

for safe disconnection according to CSN EN 60947-3 article 2.3

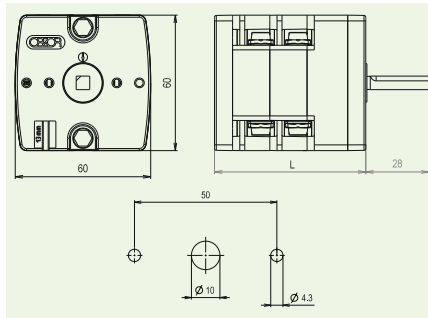
25 A

32 A





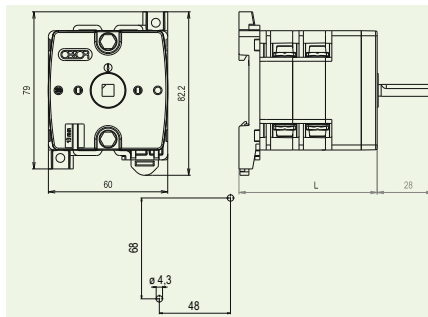
### Cam switches, front mounted (embedded)



Number of levels	Number of switching systems	Length L (mm)
1	1 - 2	50,5
2	3 - 4	67
3	5 - 6	83,5
4	7 - 8	100
5	9 - 10	116,5
6	11 - 12	133
7	13 - 14	149,5
8	15 - 16	166
9	17 - 18	182,5
10	19 - 20	199
11	21 - 22	215,5
12	23 - 24	232

Length of the control shaft can be extended at customer's discretion in 16.5 mm sections.

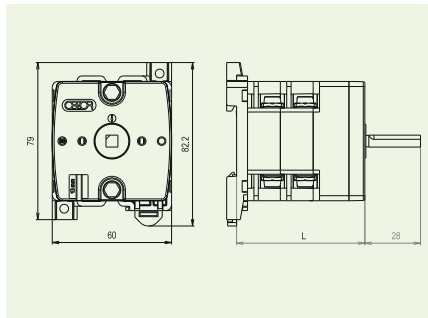
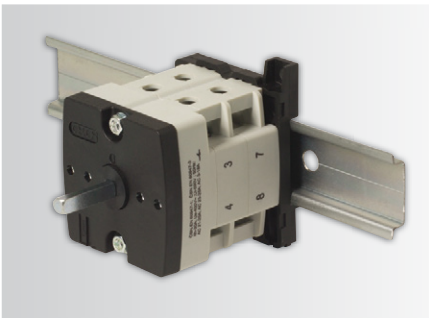
### Cam switches, back mounted on screws



Number of levels	Number of switching systems	Length L (mm)
1	1 - 2	53
2	3 - 4	69,5
3	5 - 6	86
4	7 - 8	102,5
5	9 - 10	119
6	11 - 12	135,5
7	13 - 14	152
8	15 - 16	168,5
9	17 - 18	185
10	19 - 20	201,5
11	21 - 22	218
12	23 - 24	234,5

Length of the control shaft can be extended at customer's discretion in 16.5 mm sections.

### Cam switches, back mounted on DIN batten



Number of levels	Number of switching systems	Length L (mm)
1	1 - 2	48
2	3 - 4	64,5
3	5 - 6	81
4	7 - 8	97,5
5	9 - 10	114
6	11 - 12	130,5
7	13 - 14	147
8	15 - 16	163,5
9	17 - 18	180
10	19 - 20	196,5
11	21 - 22	213
12	23 - 24	229,5

With the back mounted extension, VSN can be fixed using screws or to the batten of 35 × 7,5 mm according to DIN EN 50022. Length of the control shaft can be extended at customer's discretion in 16.5 mm sections.

## CAM SWITCHES

for safe disconnection according to CSN EN 60947-3 article 2.3

40 A

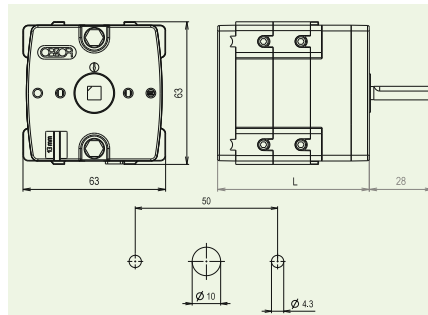
63 A

75 A





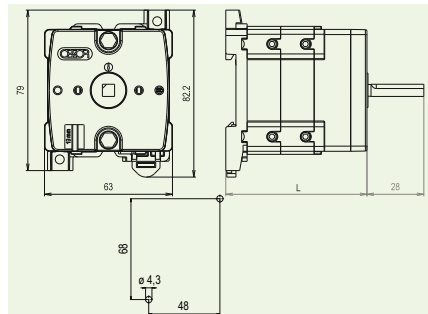
### Cam switches, front mounted (embedded)



Number of levels	Number of switching systems	Length L (mm)
1	1 - 2	50,5
2	3 - 4	67
3	5 - 6	83,5
4	7 - 8	100
5	9 - 10	116,5
6	11 - 12	133
7	13 - 14	149,5
8	15 - 16	166
9	17 - 18	182,5
10	19 - 20	199
11	21 - 22	215,5
12	23 - 24	232

Length of the control shaft can be extended at customer's discretion in 16.5 mm sections.

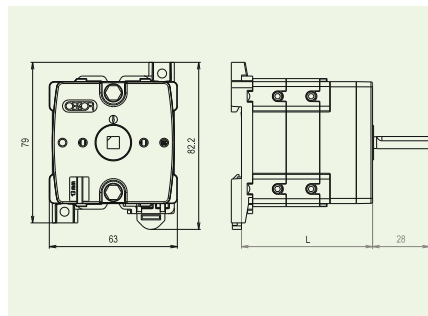
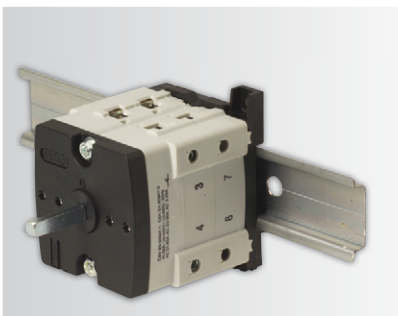
### Cam switches, back mounted on screws



Number of levels	Number of switching systems	Length L (mm)
1	1 - 2	53
2	3 - 4	69,5
3	5 - 6	86
4	7 - 8	102,5
5	9 - 10	119
6	11 - 12	135,5
7	13 - 14	152
8	15 - 16	168,5
9	17 - 18	185
10	19 - 20	201,5
11	21 - 22	218
12	23 - 24	234,5

Length of the control shaft can be extended at customer's discretion in 16.5 mm sections.

### Cam switches, back mounted on DIN batten



Number of levels	Number of switching systems	Length L (mm)
1	1 - 2	48
2	3 - 4	64,5
3	5 - 6	81
4	7 - 8	97,5
5	9 - 10	114
6	11 - 12	130,5
7	13 - 14	147
8	15 - 16	163,5
9	17 - 18	180
10	19 - 20	196,5
11	21 - 22	213
12	23 - 24	229,5

With the back mounted extension, VSN can be fixed using screws or to the batten of 35 × 7,5 mm according to DIN EN 50022. Length of the control shaft can be extended at customer's discretion in 16.5 mm sections.

VSN 75 switches are available only without the contact jumper wires.

To fulfil IP20 requirements, all idle terminals of VSN 40-75 cam switches shall be covered with plugs as standard.

## CAM SWITCHES

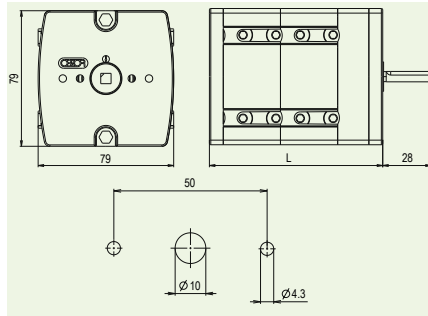
for safe disconnection according to CSN EN 60947-3 article 2.3

80 A  
100 A  
125 A  
150 A





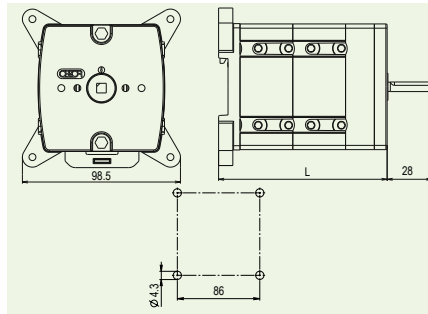
### Cam switches, front mounted (embedded)



Number of levels	Number of switching systems	Length L (mm)
1	1 - 2	67
2	3 - 4	100
3	5 - 6	133
4	7 - 8	166
5	9 - 10	199
6	11 - 12	232

Length of the control shaft can be extended at customer's discretion in 16.5 mm sections.

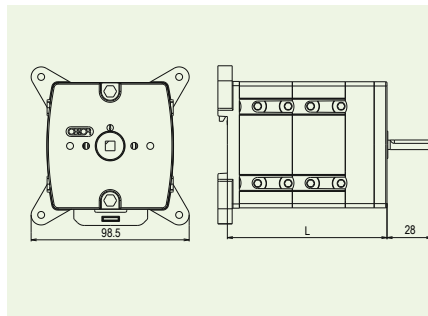
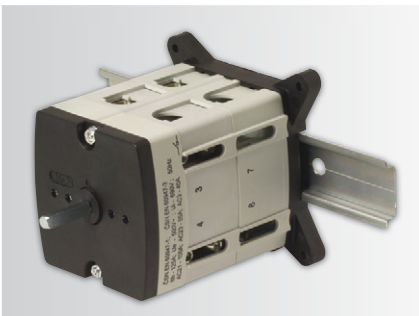
### Cam switches, back mounted on screws



Number of levels	Number of switching systems	Length L (mm)
1	1 - 2	72.5
2	3 - 4	105.4
3	5 - 6	138.4
4	7 - 8	171.4
5	9 - 10	204.4
6	11 - 12	237.4

Length of the control shaft can be extended at customer's discretion in 16.5 mm sections.

### Cam switches, back mounted on DIN batten



Number of levels	Number of switching systems	Length L (mm)
1	1 - 2	65.5
2	3 - 4	99.5
3	5 - 6	132.5
4	7 - 8	165.5
5	9 - 10	198.5
6	11 - 12	231.5

With the back mounted extension, VSN can be fixed using screws or to the batten of 35 x 7,5 mm according to DIN EN 50022. Length of the control shaft can be extended at customer's discretion in 16.5 mm sections.

To fulfil IP20 requirements, all idle terminals of VSN 80 - 150 cam switches shall be covered with plugs as standard.

## CAM SWITCHES

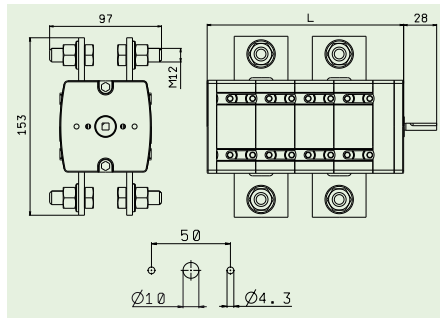
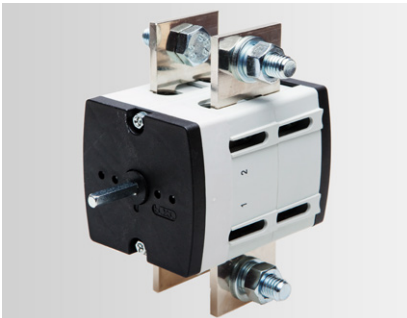
for safe disconnection according to CSN EN 60947-3 article 2.3

250 A





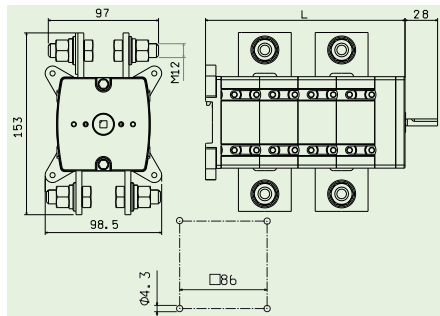
### Cam switches, front mounted (embedded)



Number of levels	Number of switching systems	Length L (mm)
1	1 - 2	100
2	3 - 4	166
3	5 - 6	232

Length of the control shaft can be extended at customer's discretion in 16.5 mm sections.

### Cam switches, back mounted on screws



Number of levels	Number of switching systems	Length L (mm)
1	1 - 2	105,4
2	3 - 4	171,4
3	5 - 6	237,4
4	7 - 8	303,4

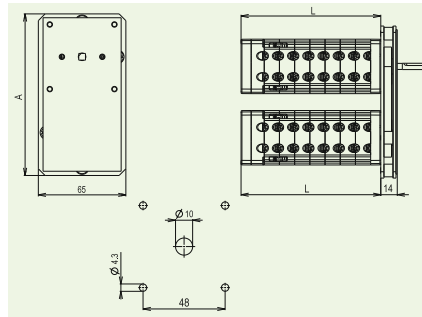
Length of the control shaft can be extended at customer's discretion in 16.5 mm sections.

Protection of connecting terminals IP 00.





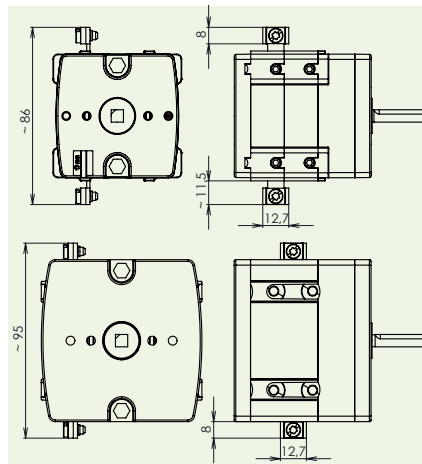
## Cam switches, mechanically mounted in parallel - E type



Type range	A (mm)
VSN 10 - 16 - 20 + VSN 10 - 16 - 20	120
VSR 10 - 16 - 20 + VSR 10 - 16 - 20	120
VSN 25 - 32 + VSN, VSR 10 - 16 - 20	120
VSN 40 - 63 - 75 + VSN, VSR 10 - 16 - 20	147
VSN 25 - 75 + VSN 25 - 75	147

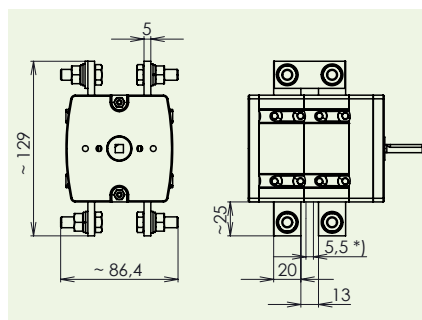
Various switching problems can be solved with an extension connecting two cam switches in parallel. For instance, in case the mounting space is limited, two shorter switches can be used instead of one longer, or in case the switching program requires more than 24 contacts (switching levels), switching can be split between cam switches. In both cases, the switches are controlled via one control arrow.

## Additional connecting terminal VSN 40 - 150



Connecting terminal allows connection of conductors with diameter 1 - 4 mm<sup>2</sup>.  
- protection IP 00  
- supplied only as a spare part

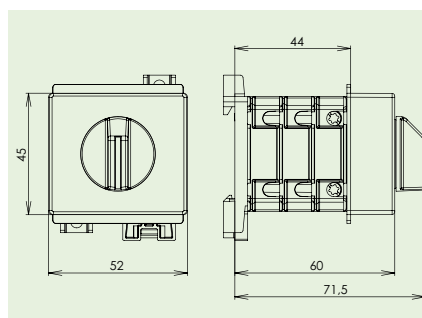
## Additional connecting terminal for cable lug VSN 80 - 150



Additional connecting terminal allows connection of conductors using cable lug endings and M8 screws.  
- supplied only as a spare part  
- protection IP 00

\*) - minimum allowed distance between cable lugs that must be kept when mounting.  
For mezzanine connection of terminals using additional connecting terminals, it is necessary to use a special connectors that need to be ordered in the same amount as the number of standard connectors between levels of the switch.

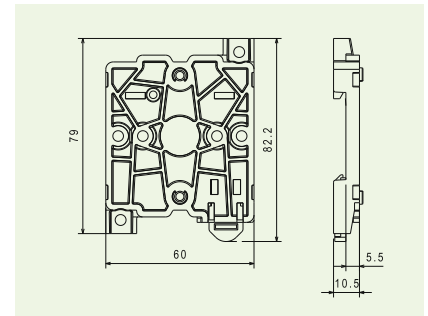
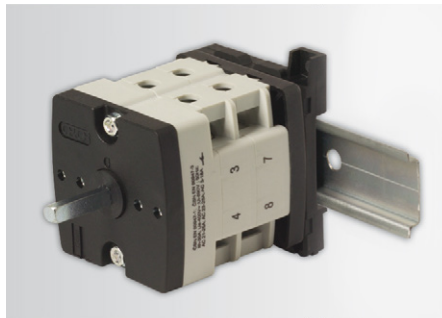
## Cam switches with front panels 45 x 52 mm



VSN 10 - 16 - 20 cam switches up to 3 switching levels can be mounted with the front panel of 45 x 52 mm to a range of module devices with the module thickness of 17,5 mm. To keep the modul device height (44 mm), the switches are fitted with switching levels with no contacts, if needed.

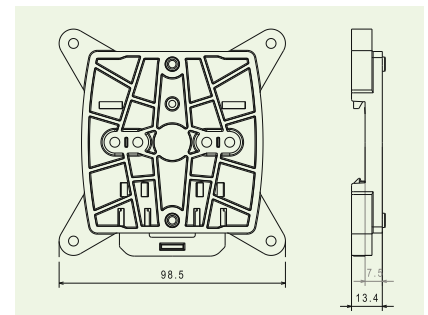
In case more switching levels are needed, the total length of 44 mm will be increased by 12 mm per each additional level. In such a case, the switches are supplied with a standard NM control lever.

**Back mounting panel for VSN 25 - 75**



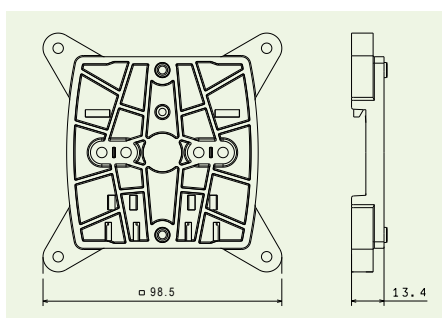
Universal model for both mounting using screws and on a DIN batten.

**Back mounting panel for VSN 80 - 100 - 125 - 150**



Universal model for both mounting using screws and on a DIN batten.

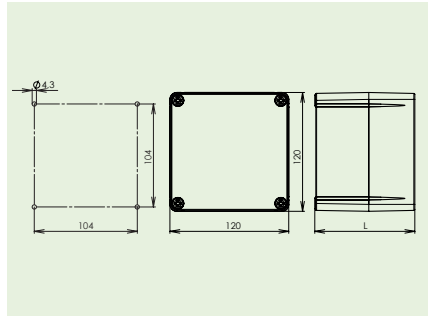
**Back mounting panel for VSN 250**



Universal model for mounting using screws.



**Protection cover K2C**



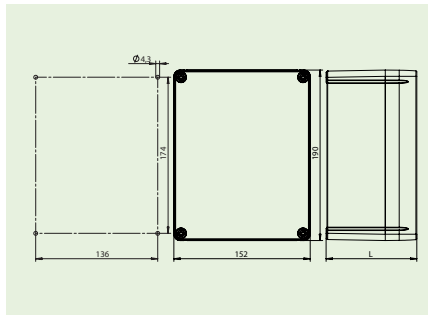
Cover	L (mm)
K2CM	101
K2CS	134
K2CV	168

**PROTECTION COVER VSN 25 - 75**

Produced in three sizes:

1. K2CM for VSN 25 - 75 max. up to 2 levels
  2. K2CS for VSN 25 - 75 max. up to 4 levels
  3. K2CV for VSN 25 - 75 max. up to 6 levels
- IP 65, installation on vertical surface
  - for switches without auxiliaries
  - outlets placed in the upper and lower part of the cover max. 2 x PG 21 (1 x PG 29)
  - cover fitted with N, PE conductors terminals
  - plastic material - suitable also for mounting on materials of B, C1, C2 flammability grades

**Protection cover K2D**



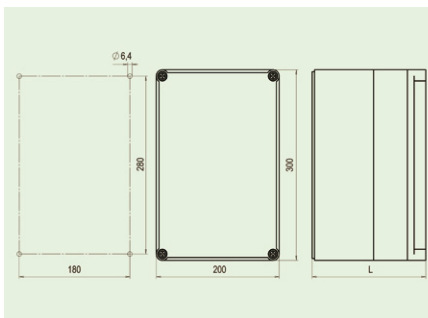
Cover	L (mm)
K2DM	101
K2DV	168

**PROTECTION COVER VSN 25 - 75**

Produced in two sizes:

1. K2DM for VSN 25 - 75 up to max. 3 levels
  2. K2DV for VSN 25 - 75 up to max. 6 levels
- IP 65, installation on vertical surface
  - for switches with additional devices (switch with indicator, block lock switches, ...)
  - outlets placed in the upper and lower part of the cover (front view) max. 2 x PG 29
  - cover fitted with N, PE conductors terminals
  - plastic material - suitable also for mounting on materials of B, C1, C2 flammability grades

**Protection cover SKN**



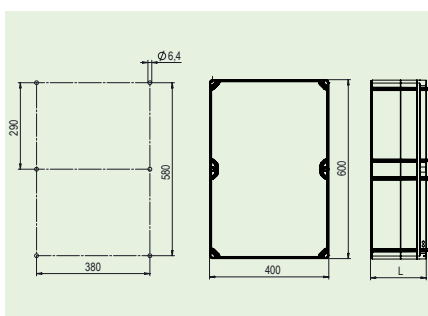
Cover	Number of levels	L (mm)
SKN	1	132
SKN	2	132
SKN	3	187
SKN	4	242

**PROTECTION COVER VSN 80 - 150**

SKN for VSN 80 - 150 max. up to 4 levels.

- IP 65, installation on vertical surface
- for switches with additional devices
- outlets placed in the upper and lower part of the cover (front view) max. 2x PG 36
- cover fitted with N, PE conductors terminals
- plastic material

**Protection cover SKV**



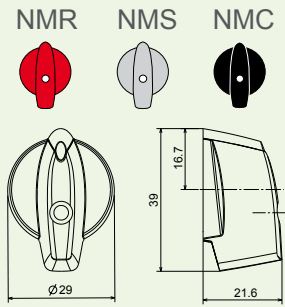
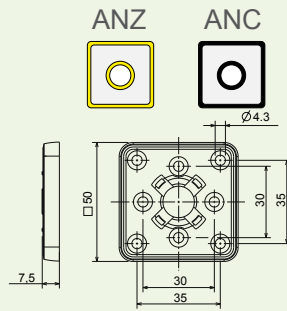
Cover	Number of levels	L (mm)
SKV	1	132
SKV	2	242
SKV	3	297

**PROTECTION COVER VSN 250**

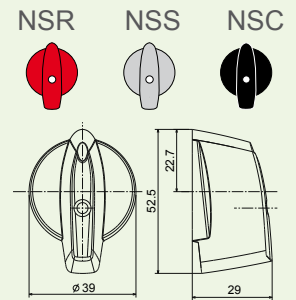
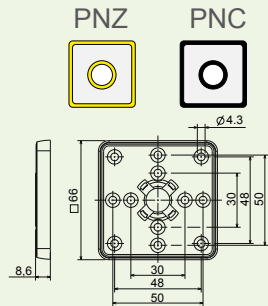
SKV for VSN 250 max. up to 3 levels.

- IP 65, installation on vertical surface
- outlets placed in the upper and lower part of the cover (front view) max. 2 x PG 48
- cover fitted with N, PE conductors terminals
- plastic material

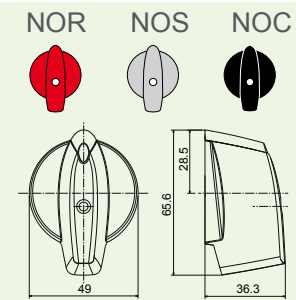
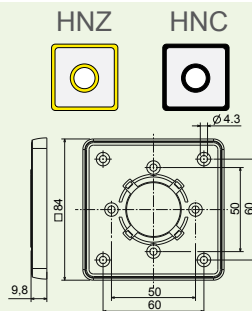
Controller and front panel - small



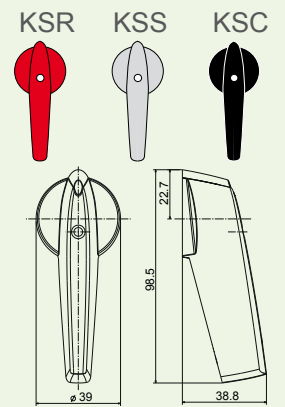
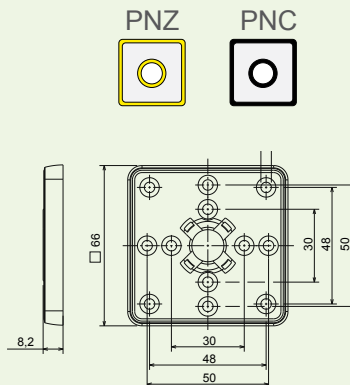
Controller and front panel - medium



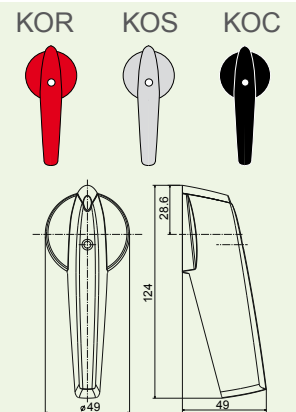
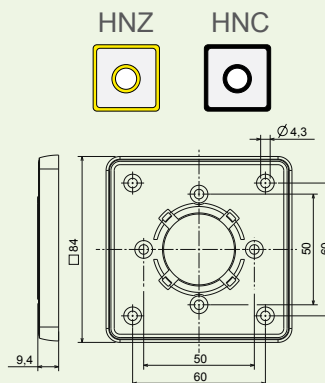
Controller and front panel - large



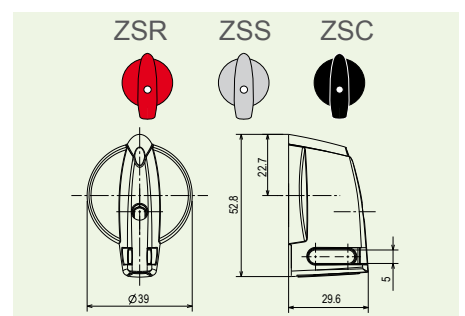
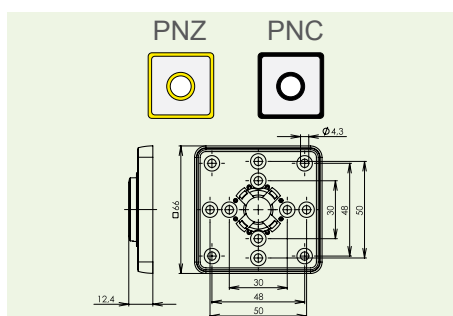
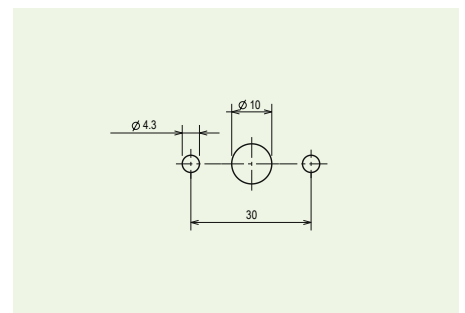
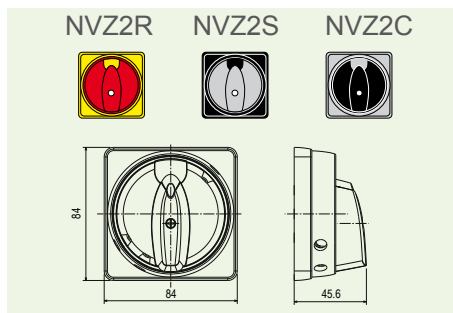
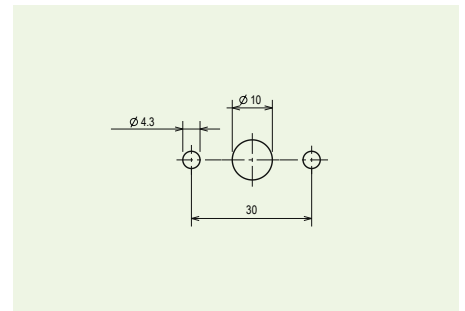
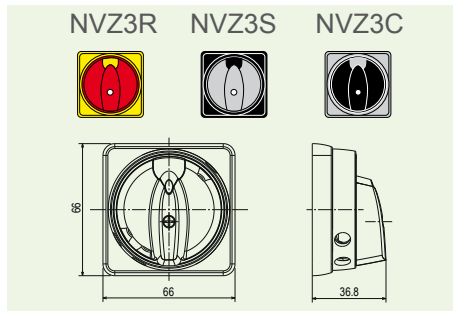
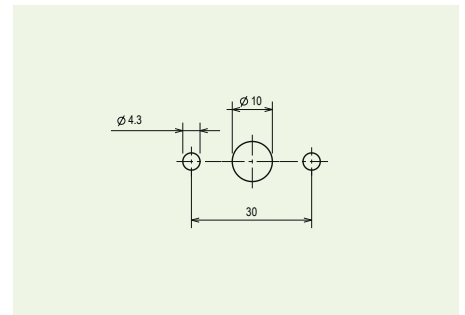
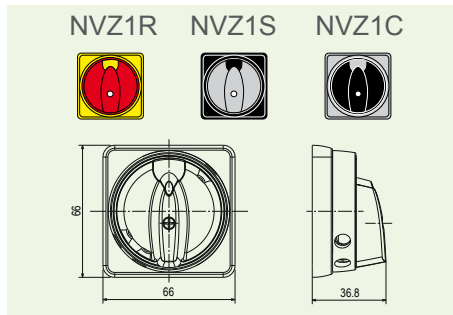
Controller (lever) and front panel - medium



Controller (lever) and front panel - large



# Control elements and front panels



Allocation of controllers (for VSN 10 - 250, VSR 10 - 20 switches):

controller	VSN type									
	VSN 10 - 16 - 20		VSN 25 - 32		VSN 40 - 63 - 75		VSN 80 - 100 - 125 - 150		VSN 250	
number of switch levels	1-6	7-12	1-6	7-12	1-6	7-12	1-3	4-6	1-2	3-4
NM	✓	✗	✗	✗	✗	✗	✗	✗	✗	✗
NS/5	✓	✓	✗	✗	✗	✗	✗	✗	✗	✗
NS/6	✗	✗	✓	✗	✓	✗	✗	✗	✗	✗
ZS/5	✓	✓	✗	✗	✗	✗	✗	✗	✗	✗
ZS/6	✗	✗	✓	✗	✓	✗	✗	✗	✗	✗
NO	✗	✗	✓	✓	✓	✓	✓	✗	✓	✗
KS/5	✓	✓	✗	✗	✗	✗	✗	✗	✗	✗
KS/6	✗	✗	✓	✓	✓	✓	✓	✓	✓	✓
KO	✗	✗	✓	✓	✓	✓	✓	✓	✓	✓
NVZ1	✓	✓	✗	✗	✗	✗	✗	✗	✗	✗
NVZ2	✗	✗	✓	✓	✓	✓	✓	✓	✓	✗
NVZ3	✗	✗	✓	✗	✓	✗	✗	✗	✗	✗

Allocation of controllers to front panels (for VSN 10 - 250, VSR 10 - 20 switches):

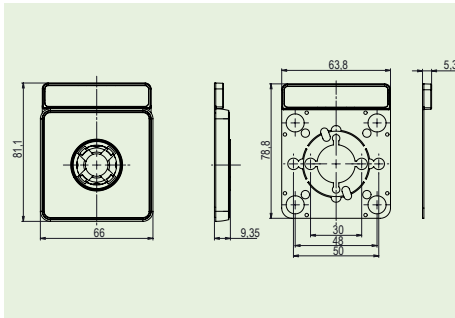
front panel	controller		
	NM	NS	NO
AN	✓	✗	✗
PN	✗	✓	✗
PN/Z*	✗	✗	✗
HN	✗	✗	✓

front panel	controller		
	ZS	KS	KO
AN	✗	✗	✗
PN	✗	✓	✗
PN/Z*	✓	✗	✗
HN	✗	✗	✓

\* as a spare part only

Note:  
 NS/5, NS/6, ZS/5, ZS/6, KS/5 a KS/6 - final number 5, 6 indicates a shaft type - the number to be mentioned only when ordering a controller separately (not when ordering together with a switch).  
 The table defines fitness of controllers to be used with the corresponding front panels up to the front panel thickness of 5 mm.

Front panel with a small additional plate



Front panels (PN) and locking equipment (NVZ1, NVZ3) of 66x66 mm can be supplemented with an additional front panel with a plate.

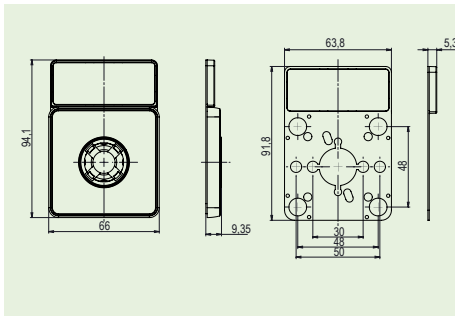
Additional front panels are black, plates are silver.

Specification:

PPNC1 (front panel with a small plate)

PPNC2 (front panel with a large plate)

Front panel with a large additional plate



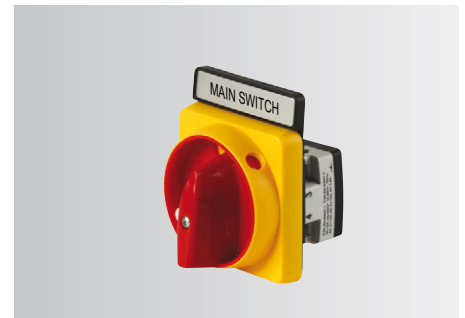
## Model examples



Additional data plate for central front panel combined with the central mounting.



Additional data plate for central front panel combined with the central front panel.



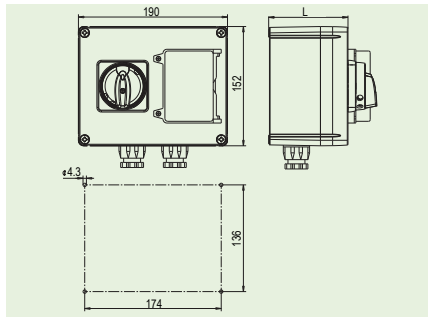
Additional data plate for central front panel combined with the lockable extension.



Cam switch in the protection cover - alternatives

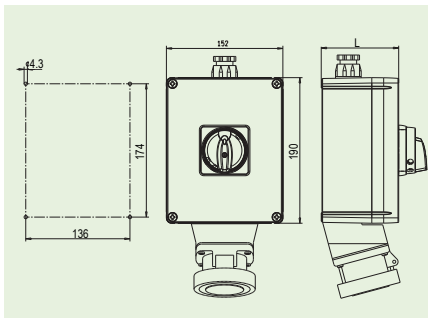


### Cam switch in the protection cover with a fuse disconnecter - K2P type



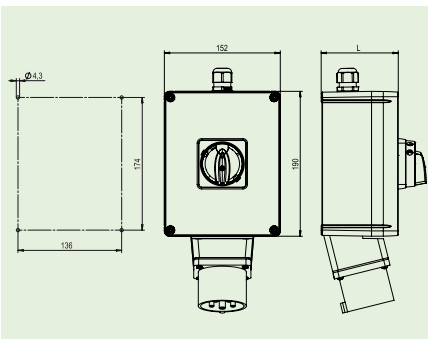
The cam switches VSN10 - 32 with IP 65 in the protection cover are available with a fuse controller or a three-pole circuit breaker.

### Cam switch in the protection cover with a socket - K2Z type



The cam switches VSN 16 - 32 with IP 65 in the protection cover are available with a socket (3P+PEN, 3P+PE+N).

### Cam switch in a protection cover with inlet - type K2R



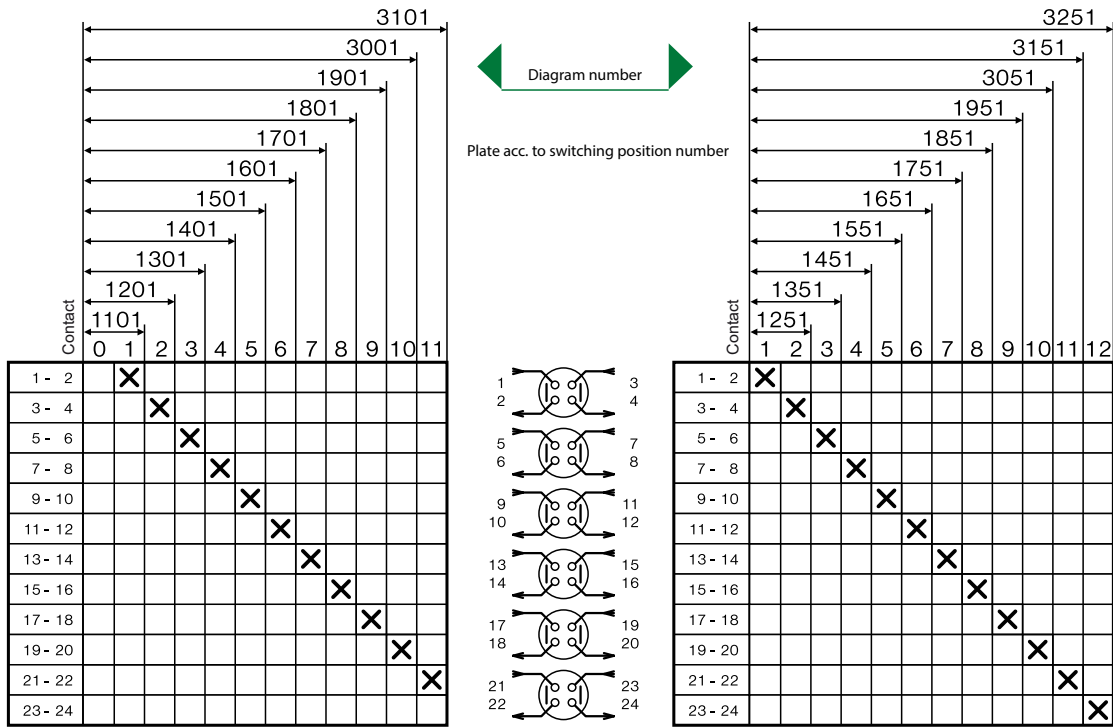
Available for cam switches VSN 16 - 32 with IP cover 54 and inlet (3P + PEN, 3P + PE + N).



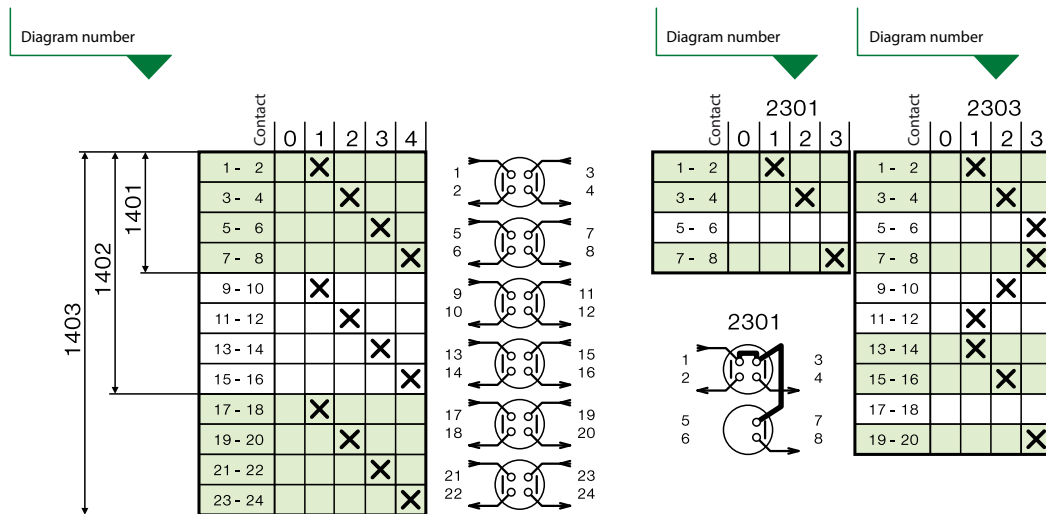
HOW TO BUILD A SWITCH DESIGNATION .....	33
SWITCHES, CHANGE-OVER SWITCHES .....	34
RESISTOR CHANGE SWITCHES .....	51
MEASURING DEVICE SWITCHES .....	52
ONE-PHASE MOTOR SWITCHES .....	56
THREE-PHASE ASYNCHRONOUS MOTOR SWITCHES .....	57
SPECIFICATION OF A TAILOR-MADE SWITCHING PROGRAM BY A CUSTOMER .....	61



# EXAMPLE OF FORMING A TYPE NUMBER



# EXAMPLES OF SWITCHING PROGRAM MULTIPLICITY AND SPECIFICATION TYPE



# SWITCHES, CHANGE-OVER SWITCHES



Diagram number

Identification on plate

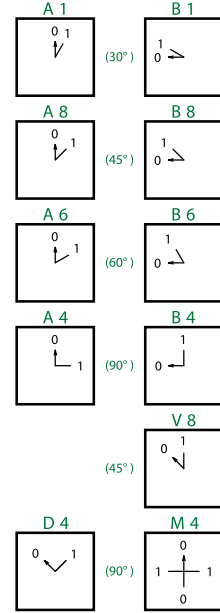
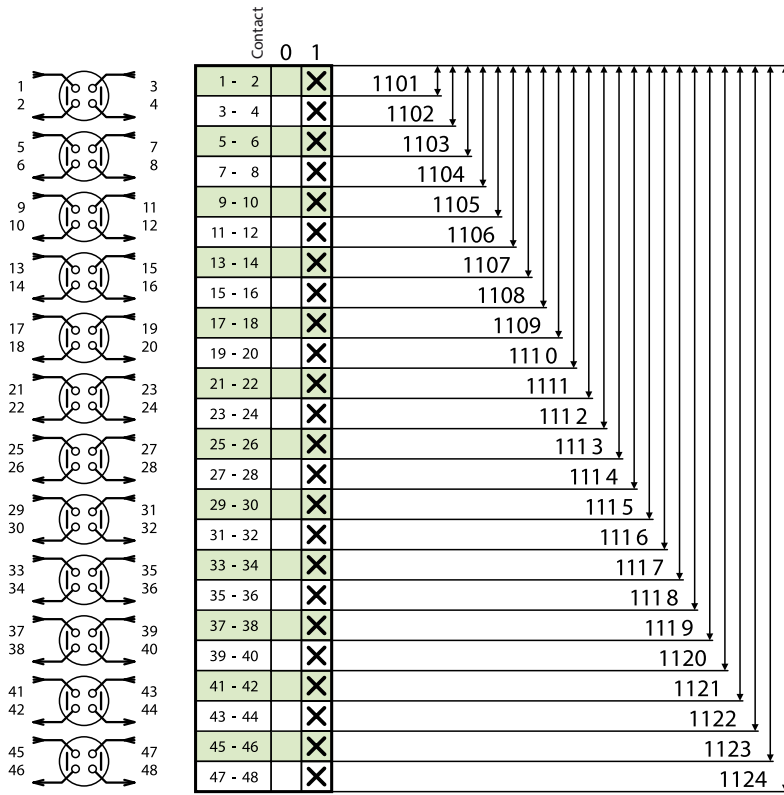
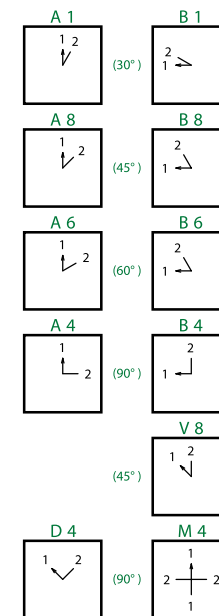
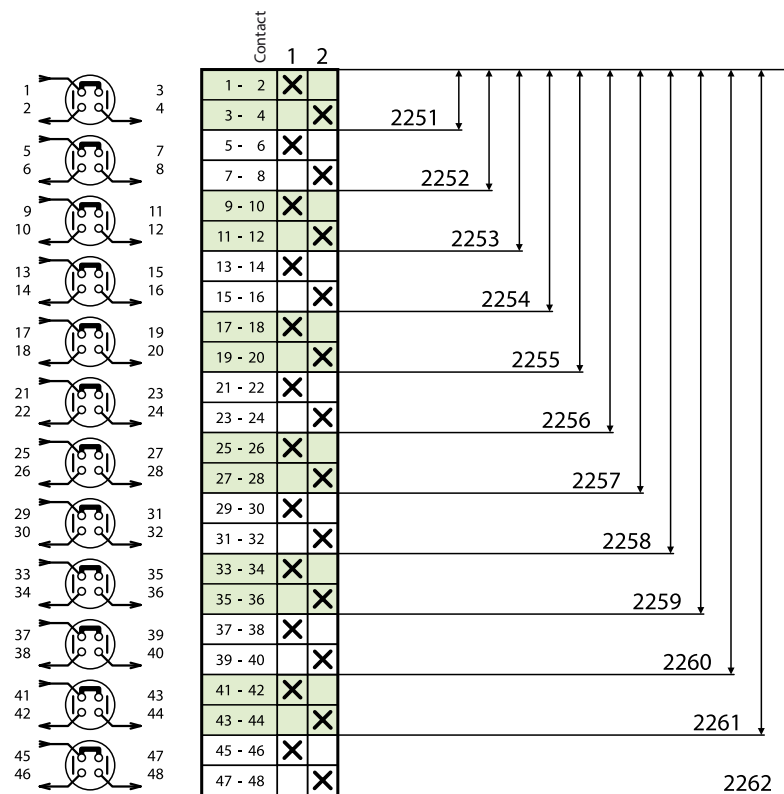
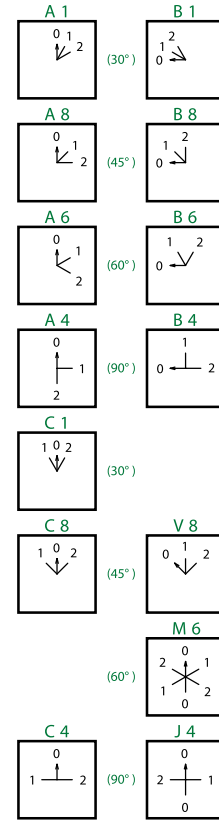
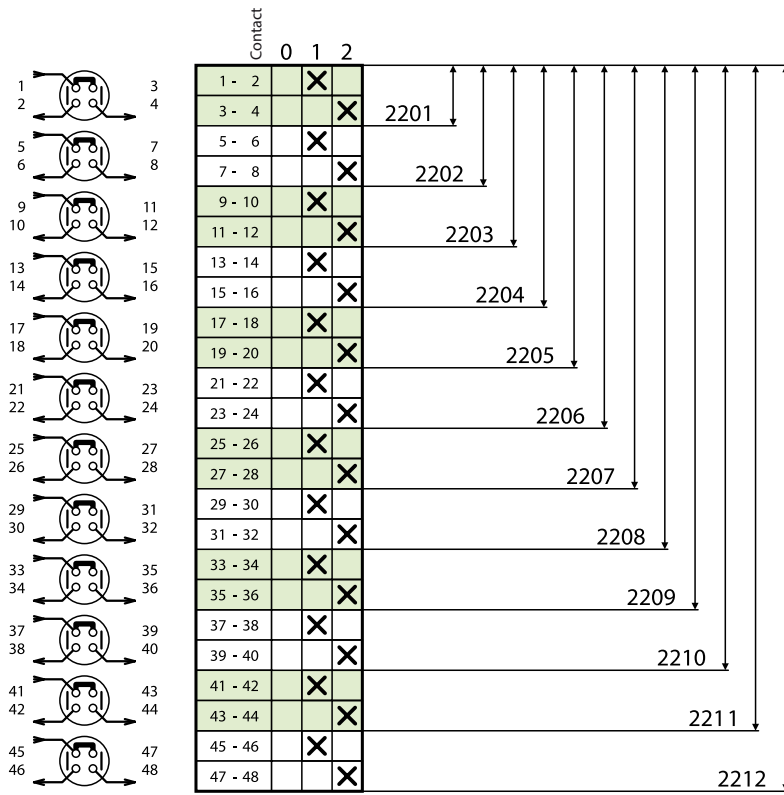


Diagram number

Identification on plate

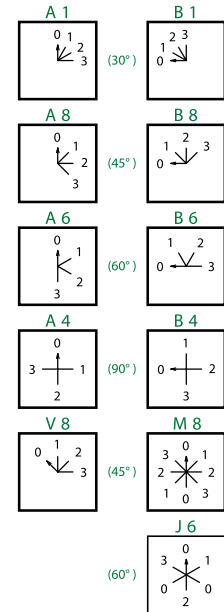
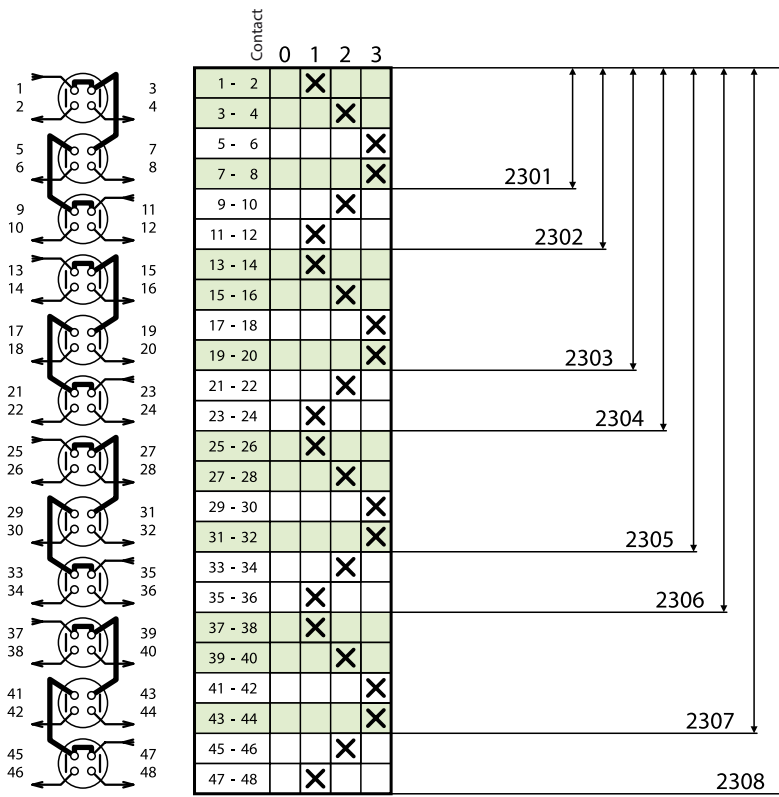


# SWITCHES, CHANGE-OVER SWITCHES

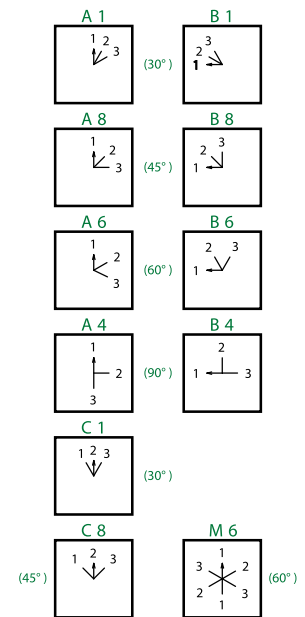
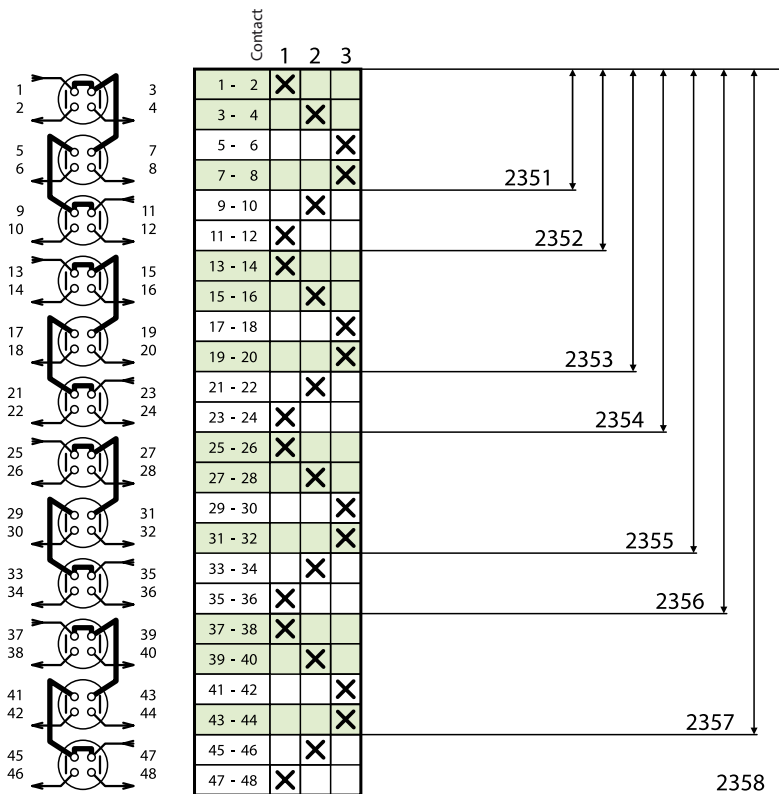


Diagram number

Identification on plate



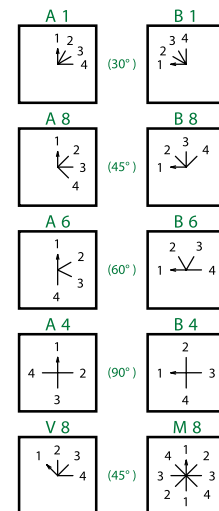
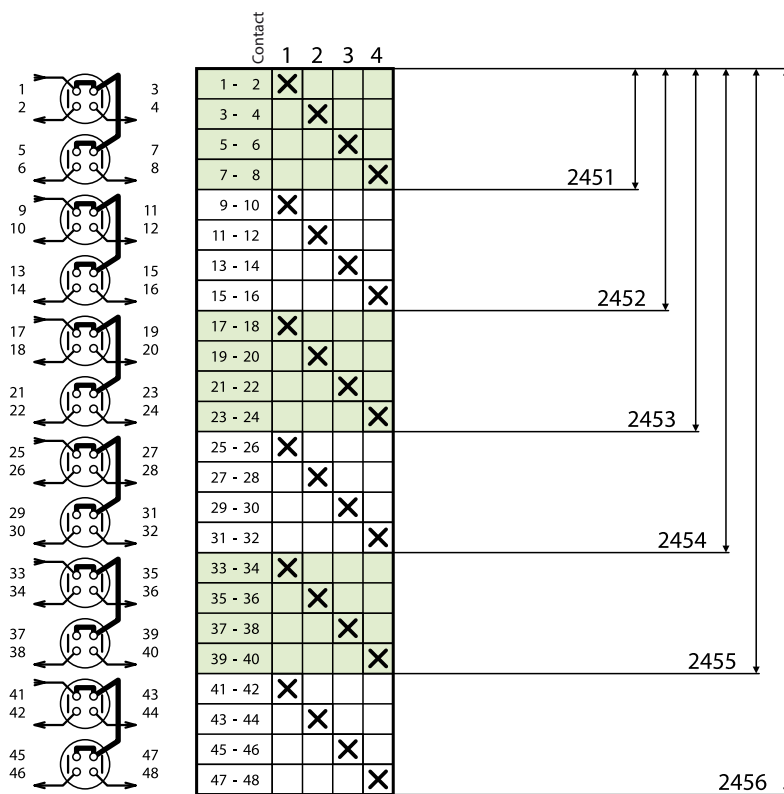
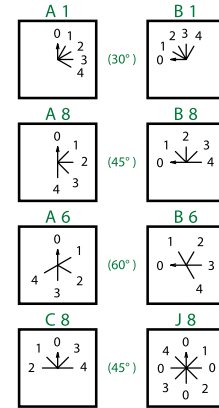
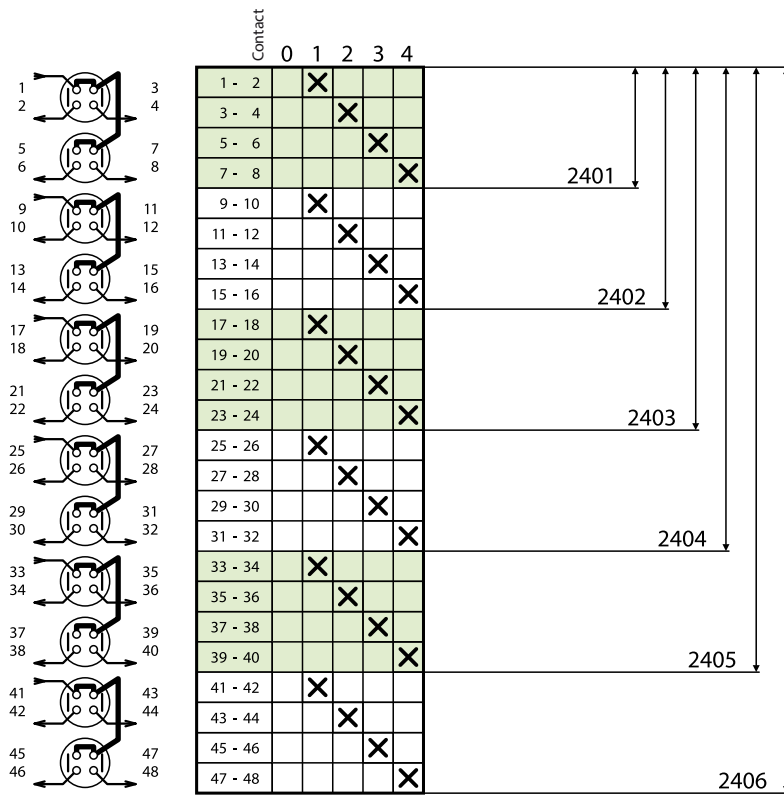
Warning	
Diagram number	Idle contact
2301	5 - 6
2303	17 - 18
2305	29 - 30
2307	41 - 42



Warning	
Diagram number	Idle contact
2351	5 - 6
2353	17 - 18
2355	29 - 30
2357	41 - 42

Diagram number

Identification on plate



# SWITCHES, CHANGE-OVER SWITCHES



Diagram number

Identification on plate

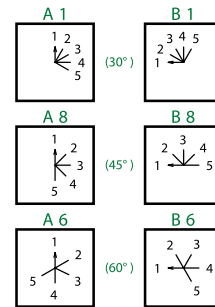
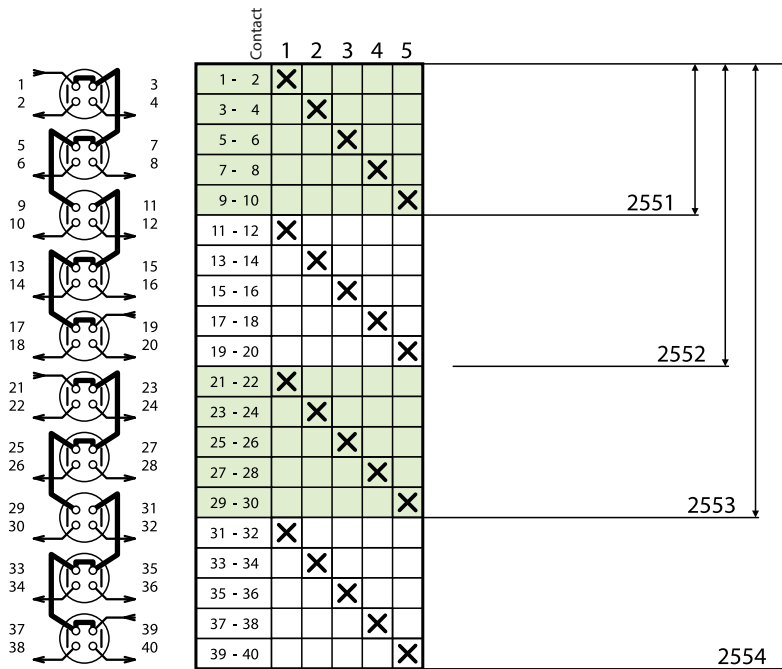
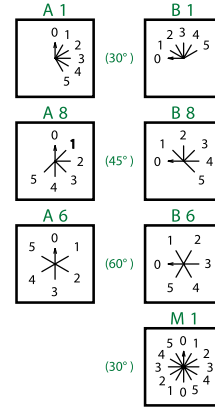
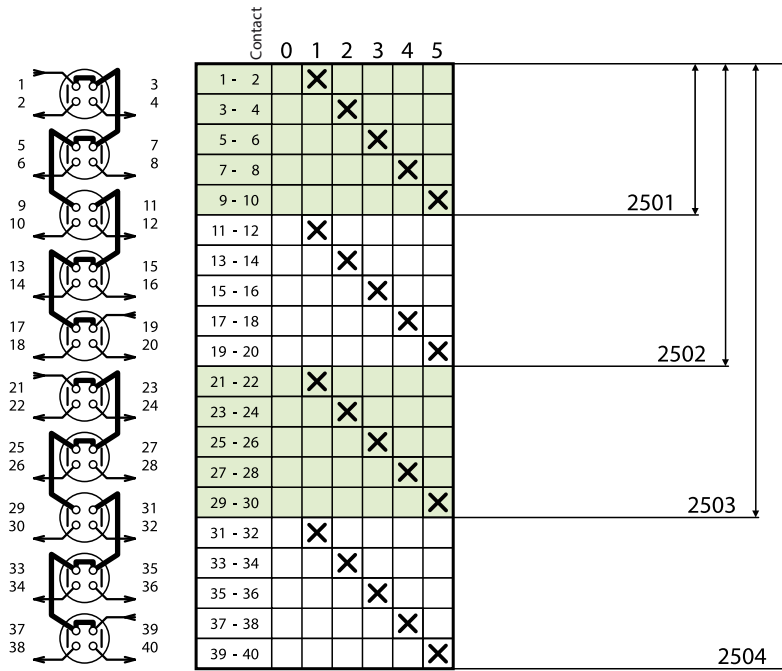
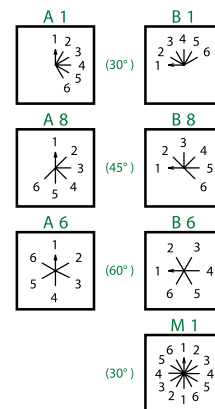
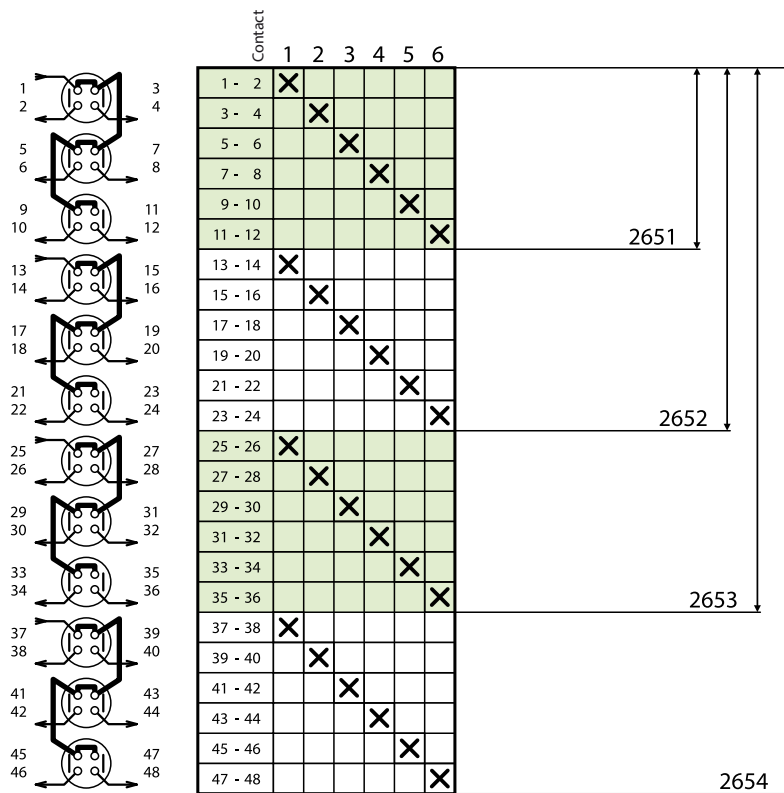
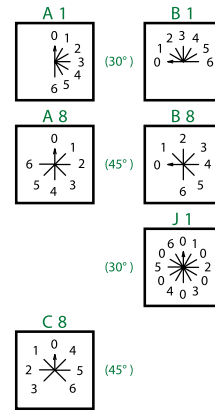
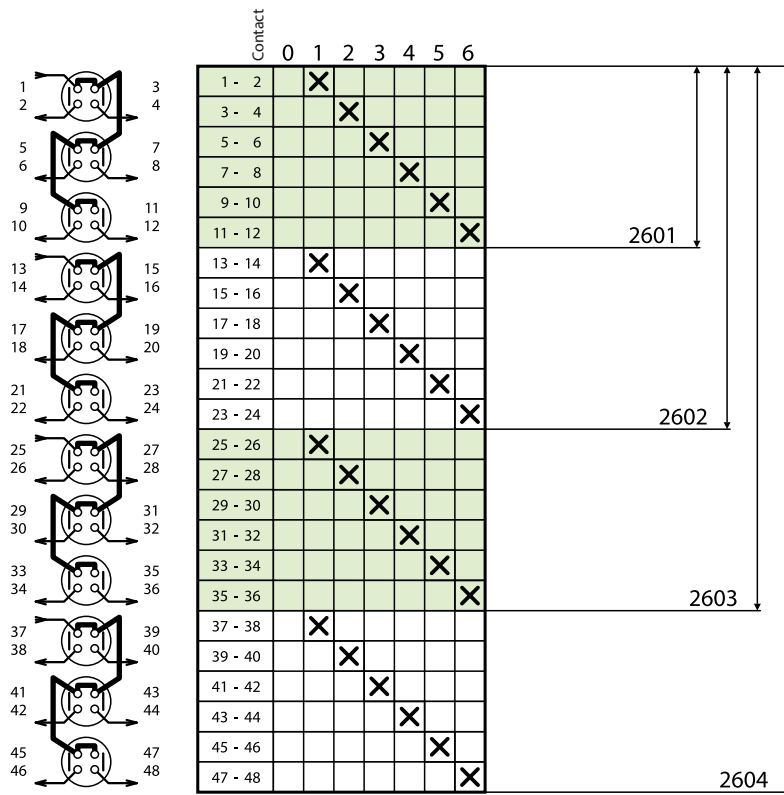


Diagram number

Identification on plate

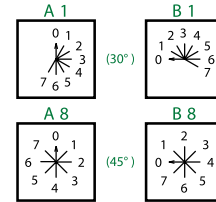
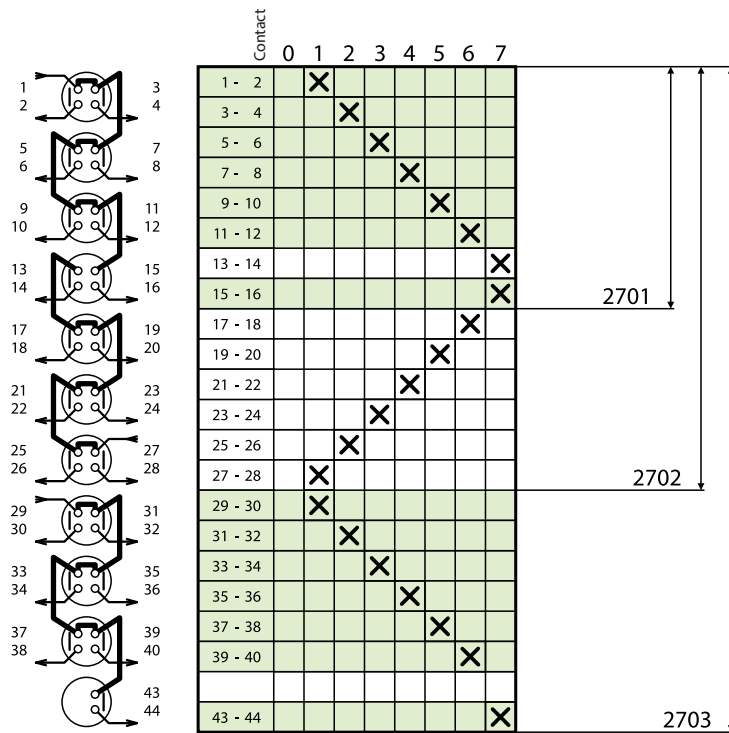


# SWITCHES, CHANGE-OVER SWITCHES

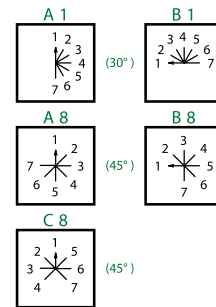
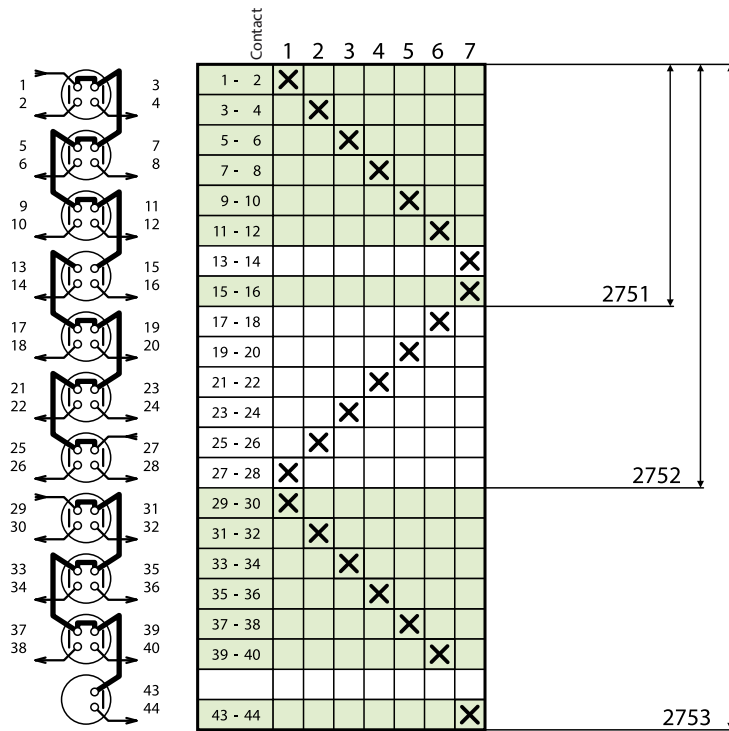


Diagram number

Identification on plate



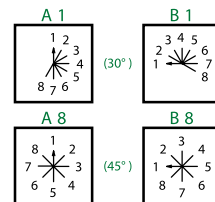
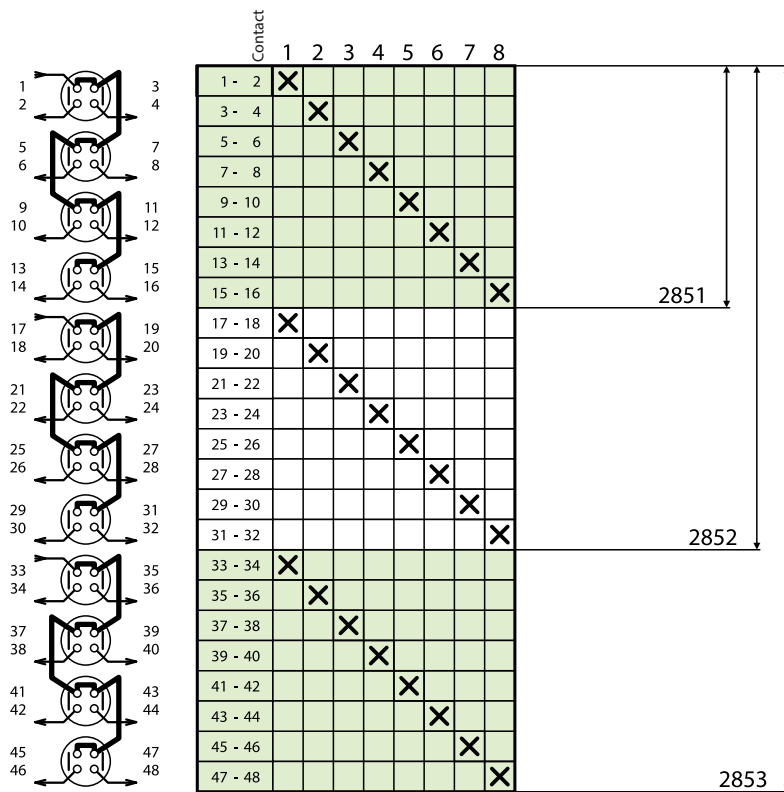
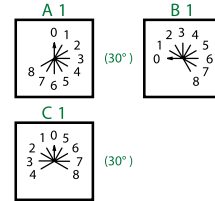
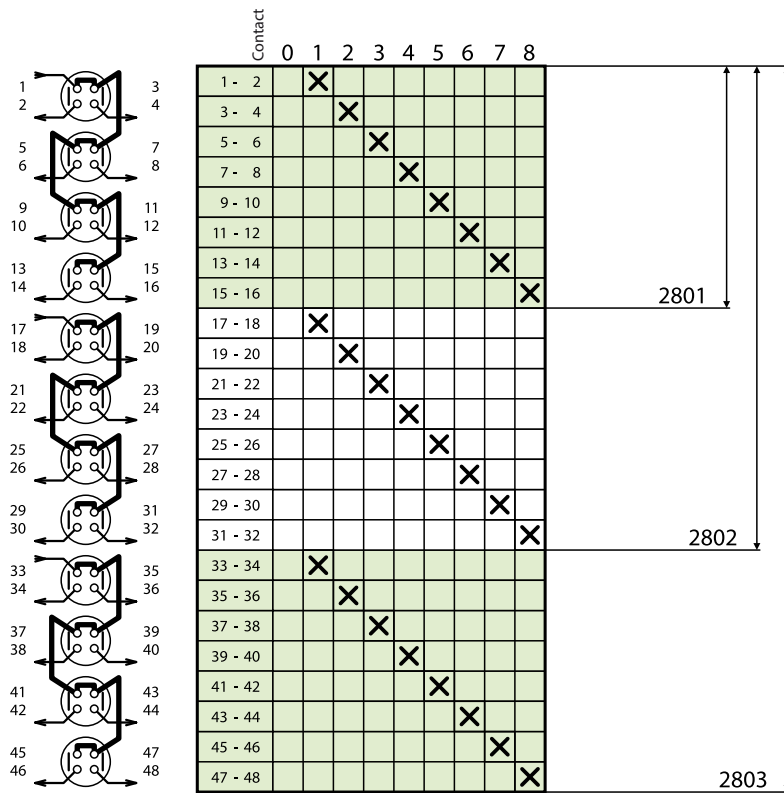
Warning	
Diagram number	Idle contact
2701	13 - 14
2703	41 - 42



Warning	
Diagram number	Idle contact
2751	13 - 14
2753	41 - 42

Diagram number

Identification on plate



# SWITCHES, CHANGE-OVER SWITCHES



Diagram number

Identification on plate

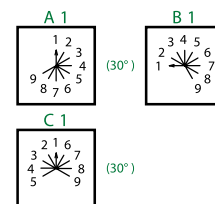
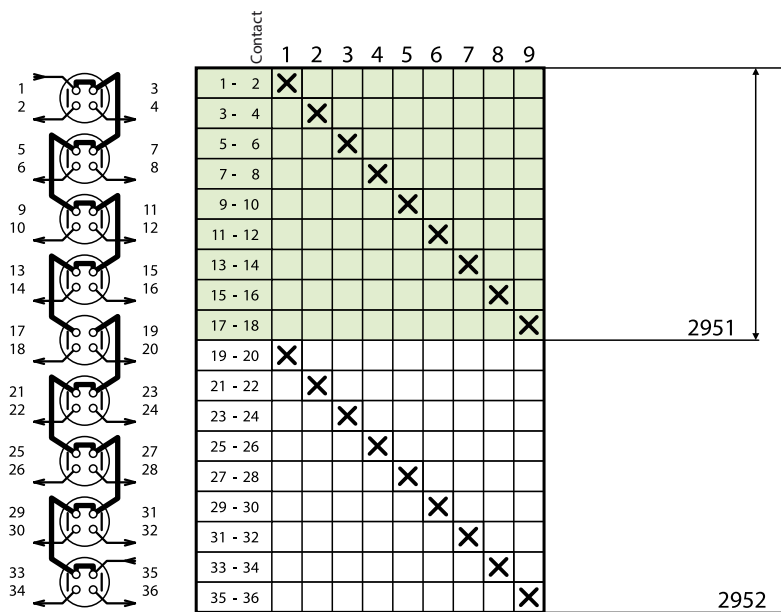
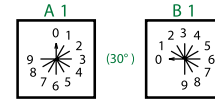
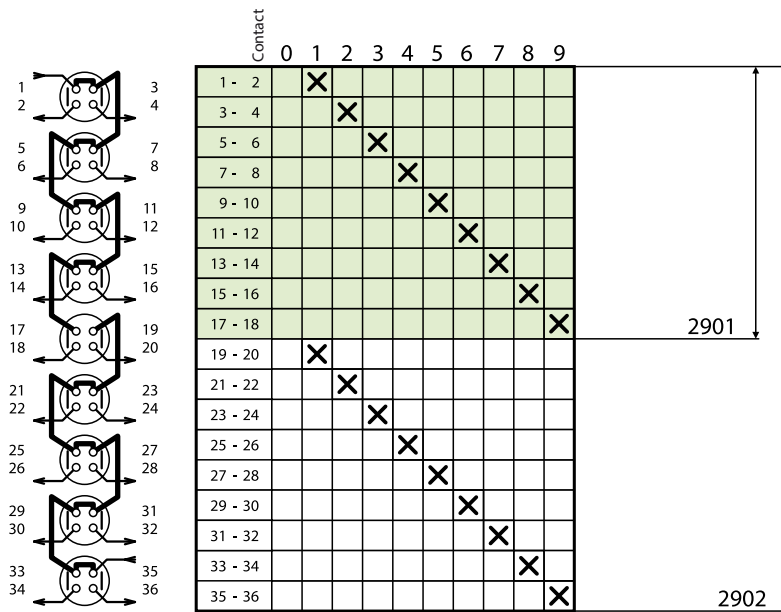
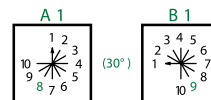
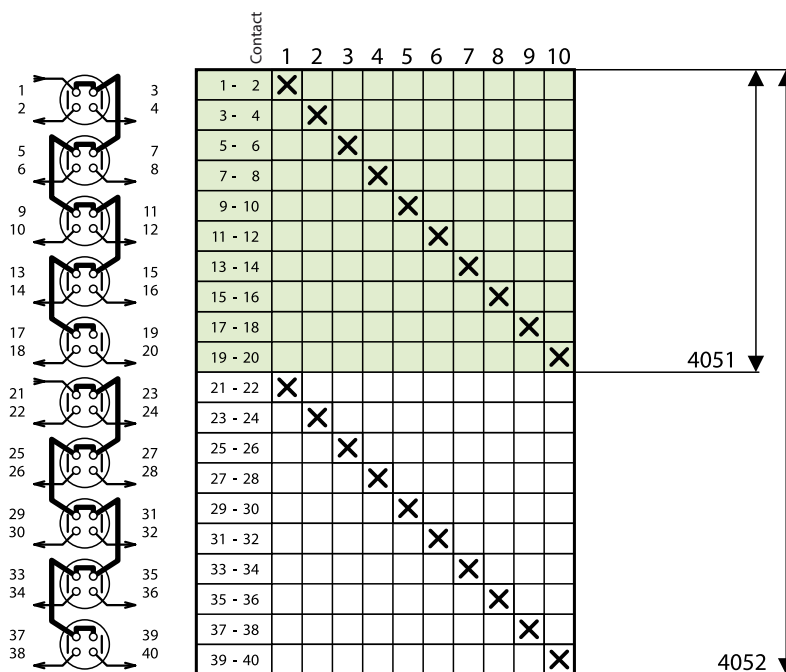
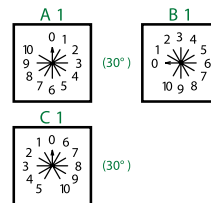
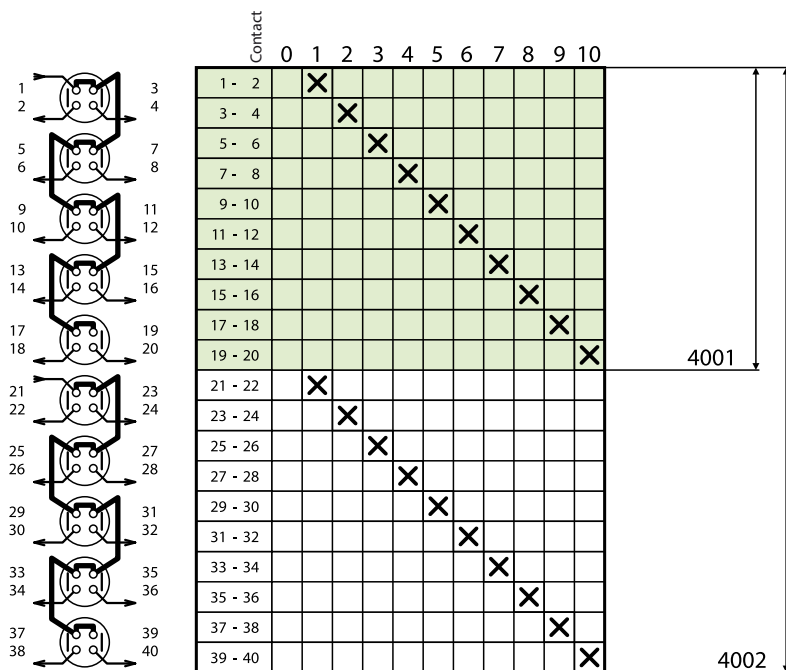


Diagram number

Identification on plate

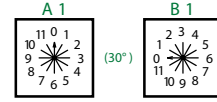
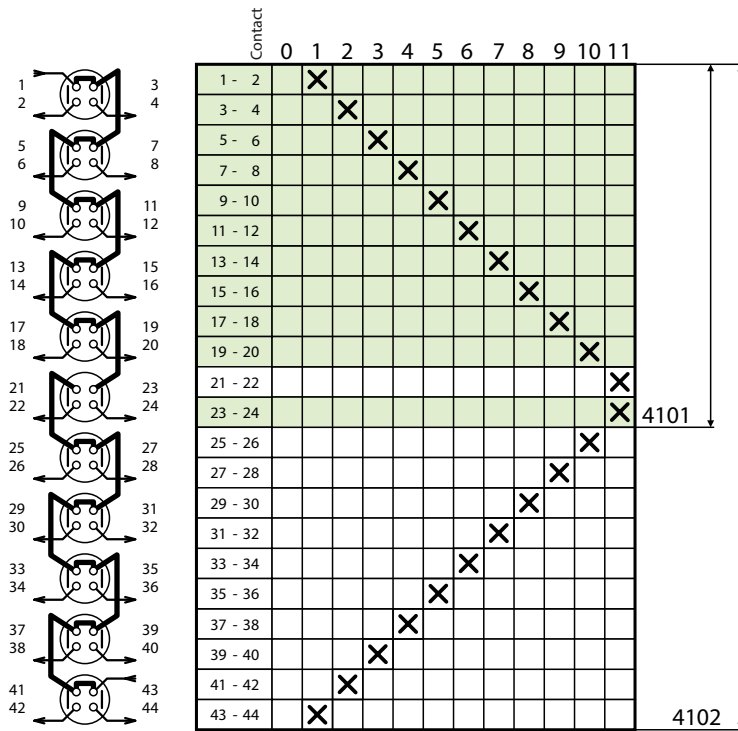


# SWITCHES, CHANGE-OVER SWITCHES

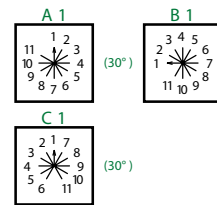
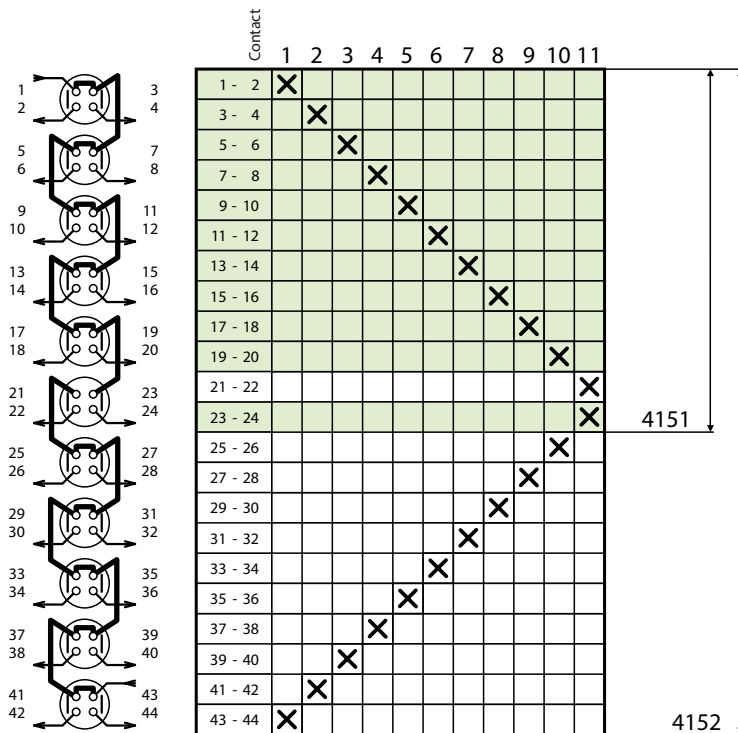


Diagram number

Identification on plate



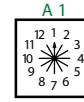
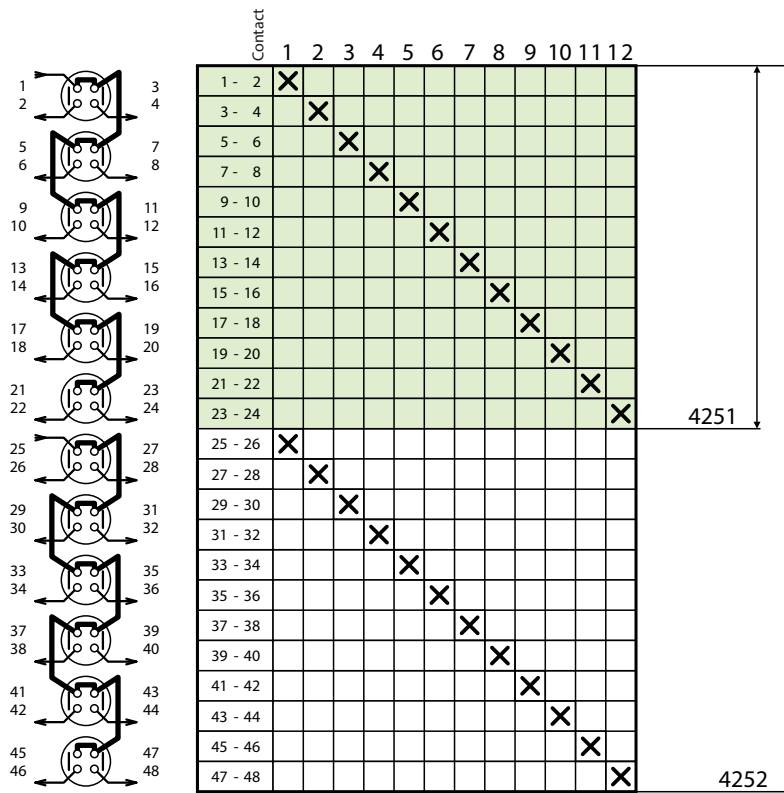
Warning	
Diagram number	Idle contact
4101	21 - 22



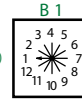
Warning	
Diagram number	Idle contact
4151	21 - 22

Diagram number

Identification on plate



(30°)

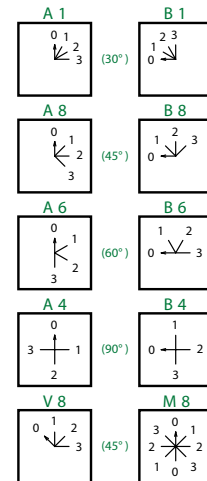
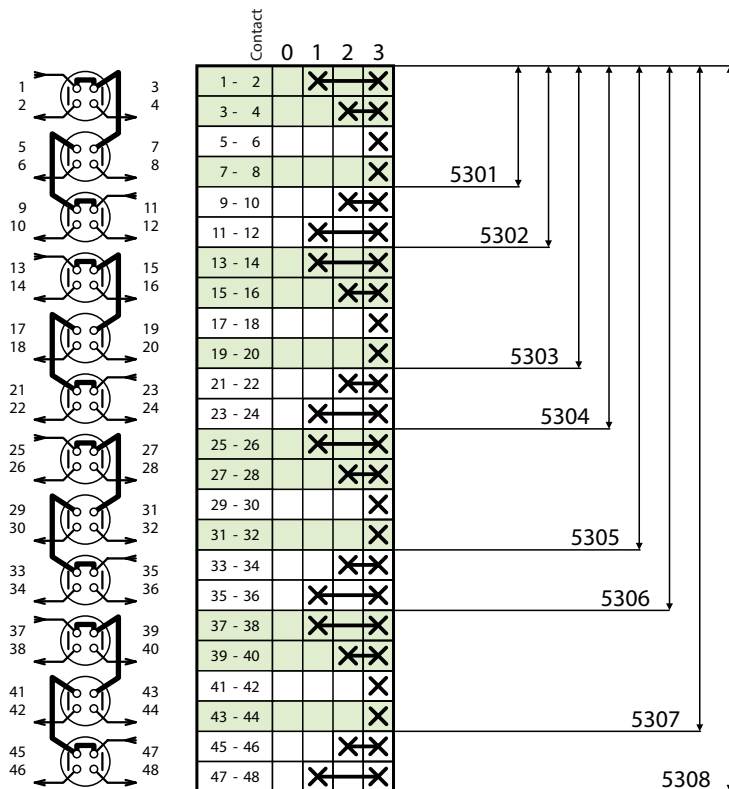
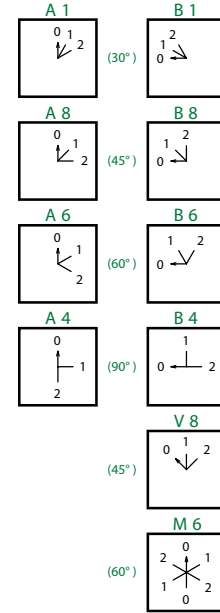
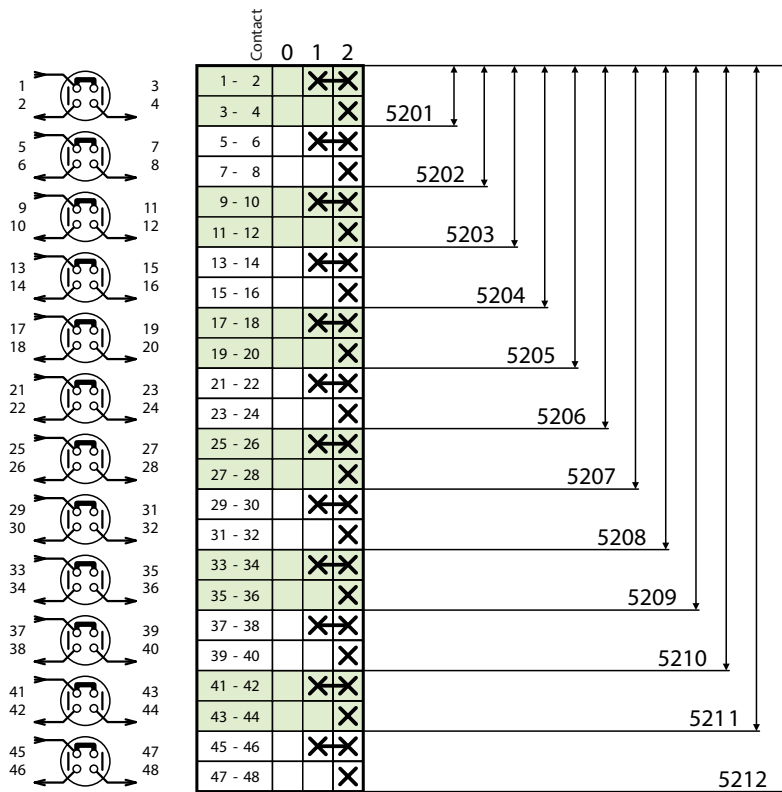


# SWITCHES, CHANGE-OVER SWITCHES



Diagram number

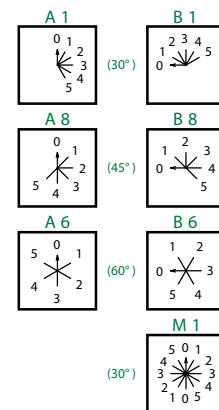
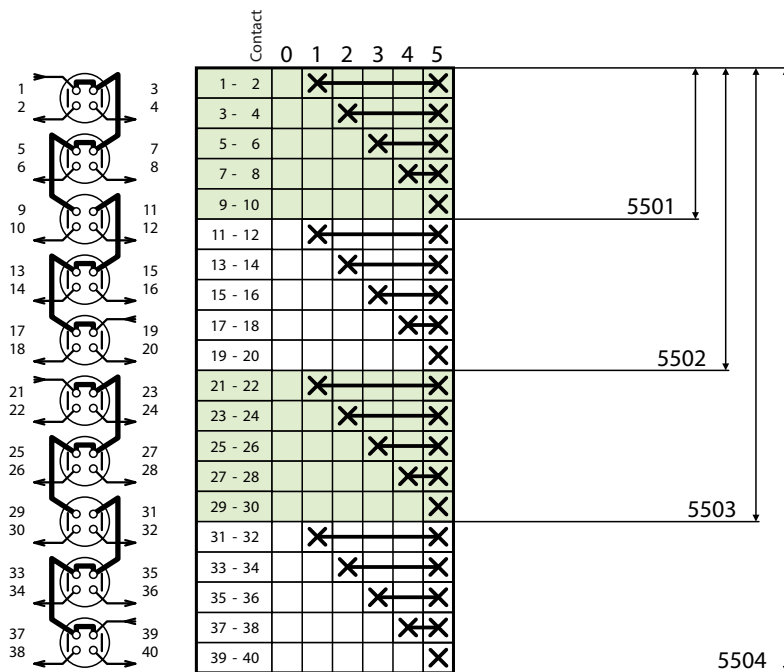
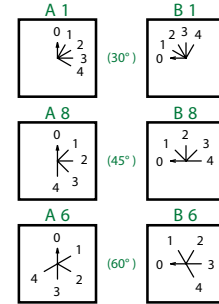
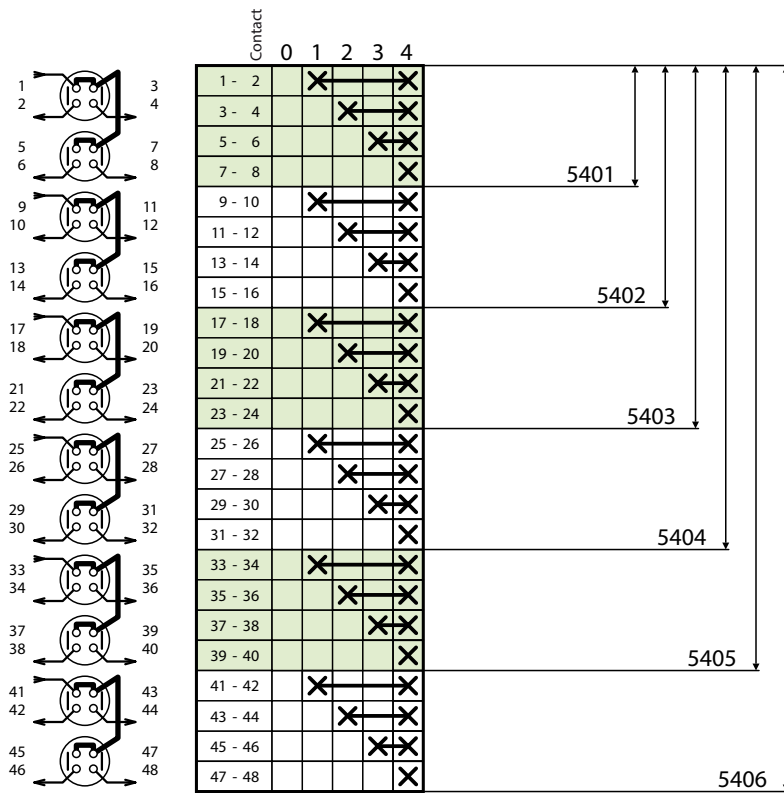
Identification on plate



Warning	
Diagram number	Idle contact
5301	5 - 6
5303	17 - 18
5305	29 - 30
5307	41 - 42

Diagram number

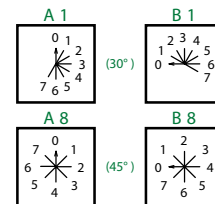
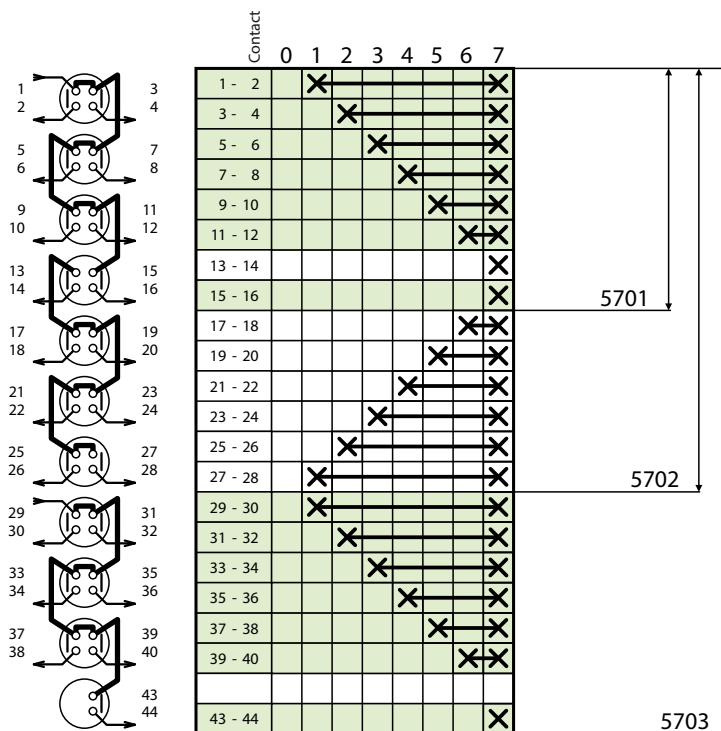
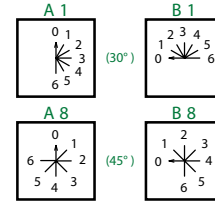
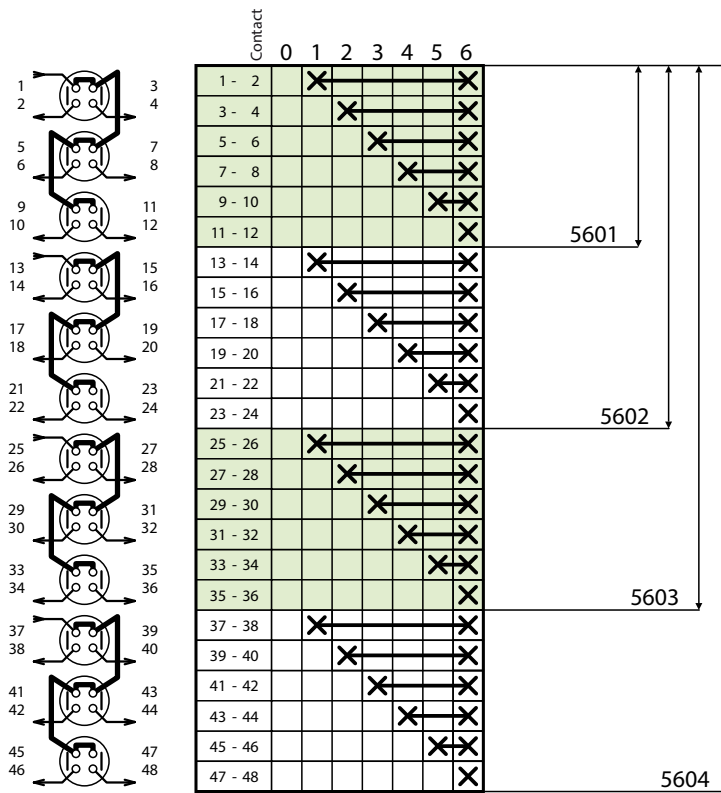
Identification on plate



# SWITCHES, CHANGE-OVER SWITCHES

Diagram number

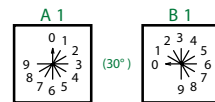
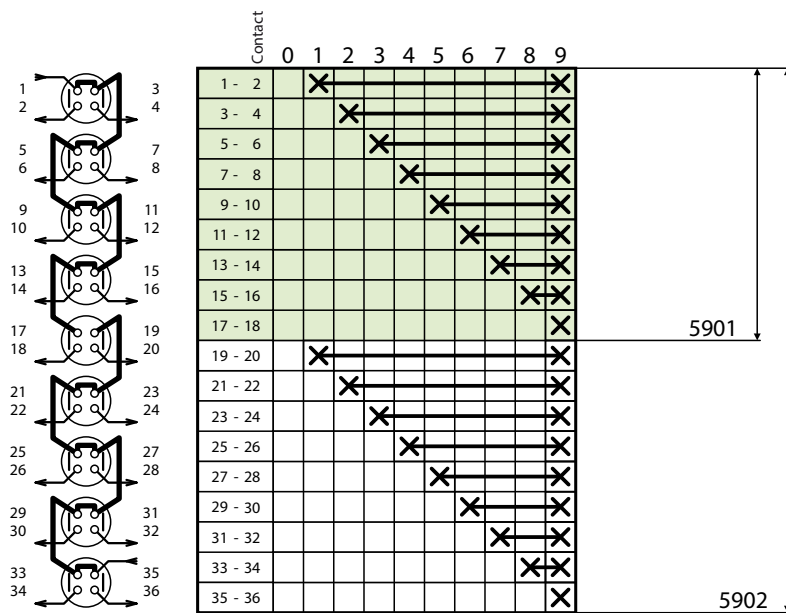
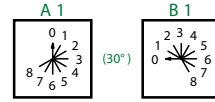
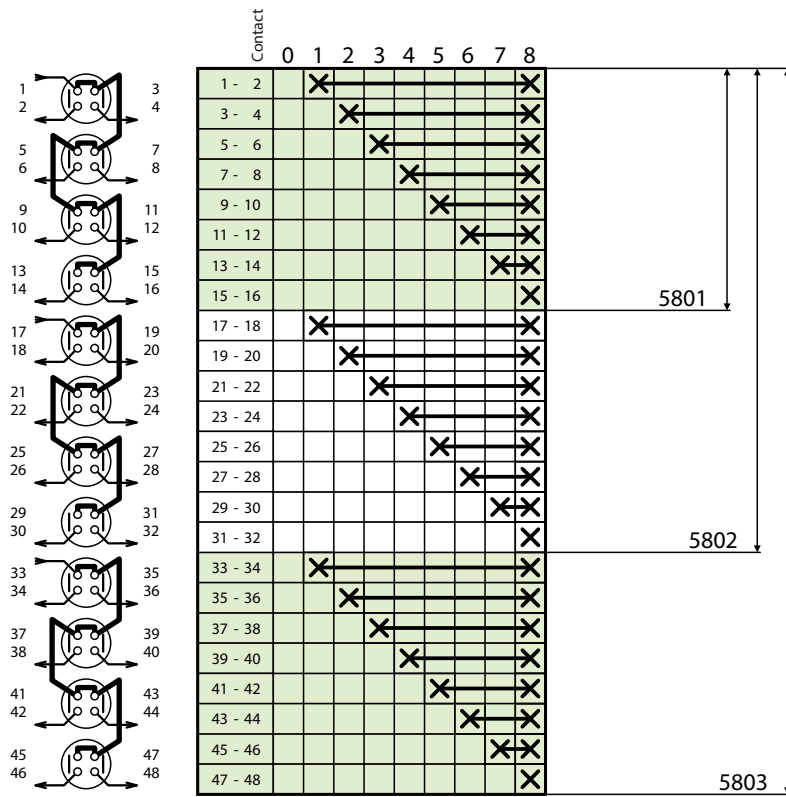
Identification on plate



Warning	
Diagram number	Idle contact
5701	13 - 14
5703	41 - 42

Diagram number

Identification on plate

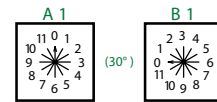
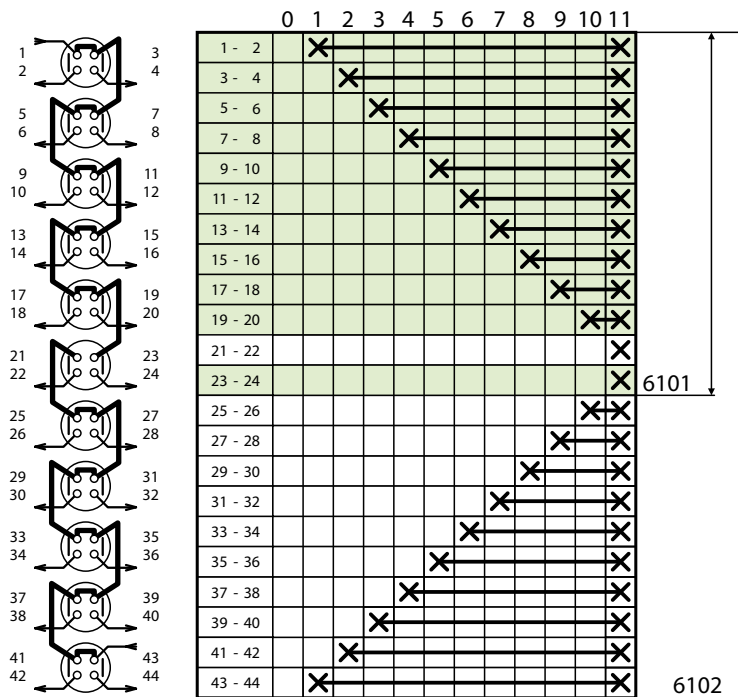
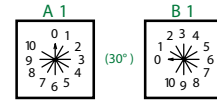
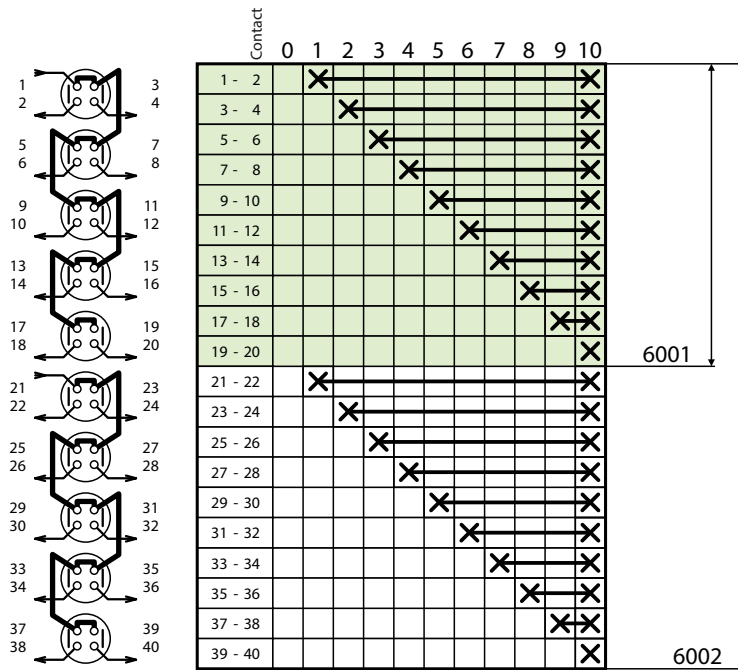


# SWITCHES, CHANGE-OVER SWITCHES



Diagram number

Identification on plate



Warning	
Diagram number	Idle contact
6101	21 - 22

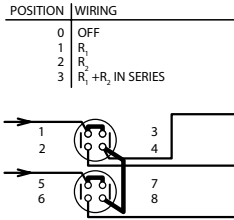
Diagram number

Identification on plate

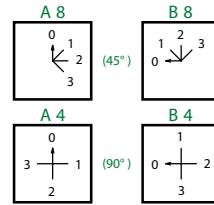
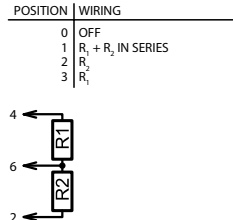
7202

Contact	0	1	2	3
1 - 2		X	X	
3 - 4				X
5 - 6			X	X
7 - 8	X			

**ALTERNATIVE 1**



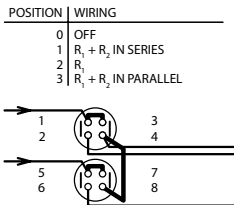
**ALTERNATIVE 2**



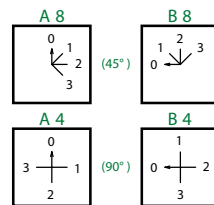
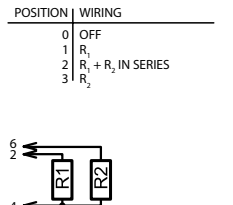
7204

Contact	0	1	2	3
1 - 2		X	X	X
3 - 4				X
5 - 6			X	X
7 - 8	X			

**ALTERNATIVE 1**

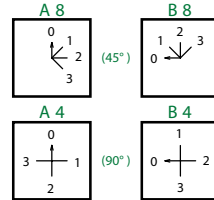
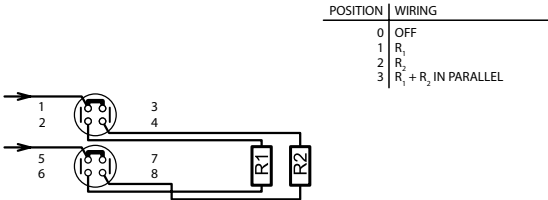


**ALTERNATIVE 2**



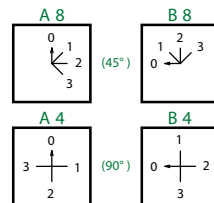
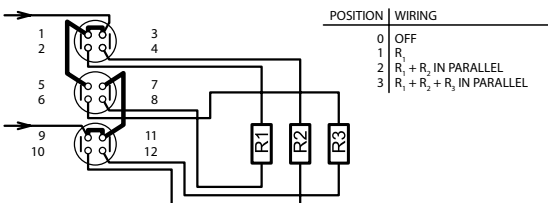
7207

Contact	0	1	2	3
1 - 2		X		X
3 - 4			X	X
5 - 6	X			X
7 - 8			X	X



7211

Contact	0	1	2	3
1 - 2		X	X	X
3 - 4			X	X
5 - 6			X	X
7 - 8	X	X	X	X
9 - 10			X	X
11 - 12				X



7607

Contact	0	1	2	3
1 - 2		X	X	X
3 - 4			X	X
5 - 6	X	X	X	X
7 - 8			X	X

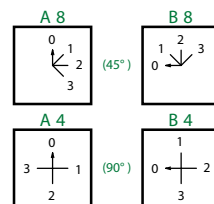
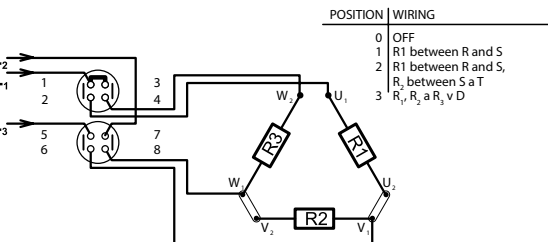
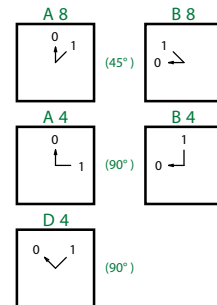
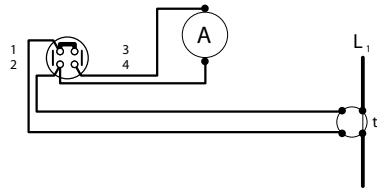
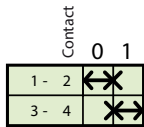




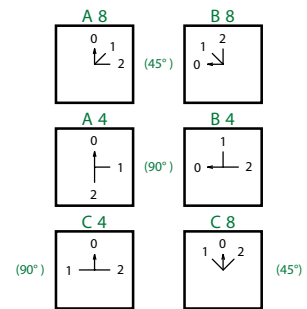
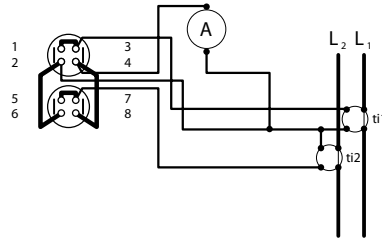
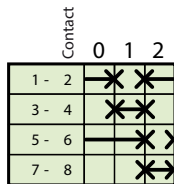
Diagram number

Identification on plate

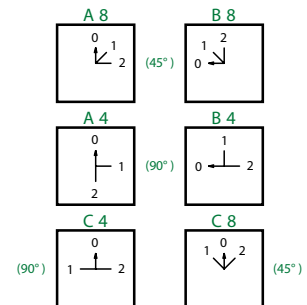
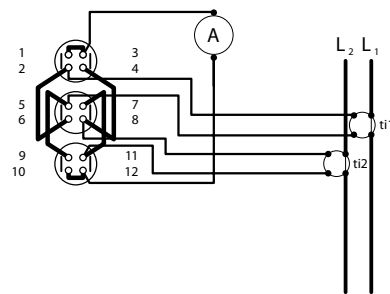
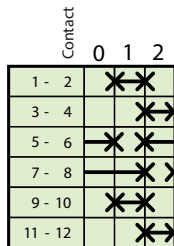
8051



8052



8053



8101

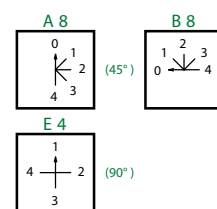
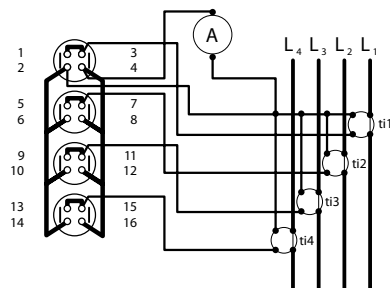
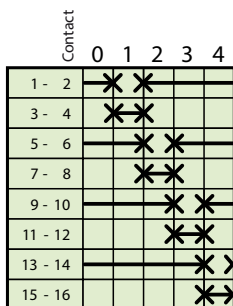
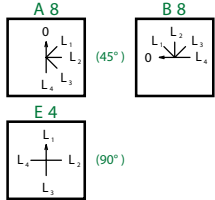
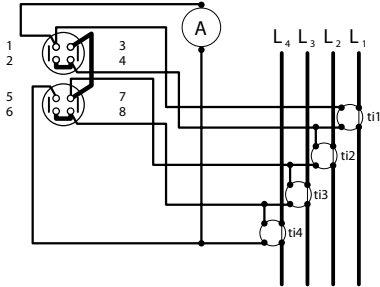
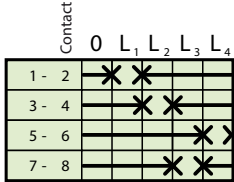


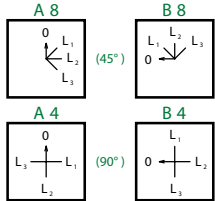
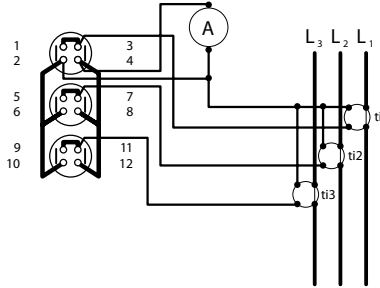
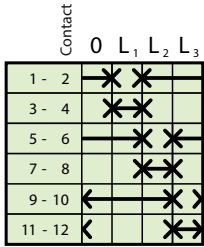
Diagram number

Identification on plate

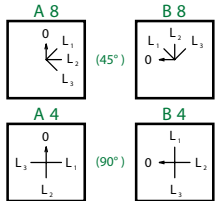
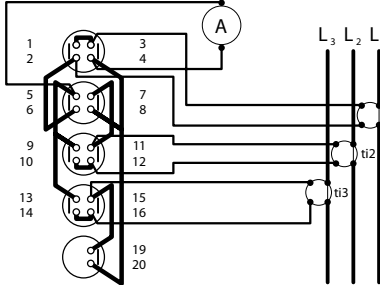
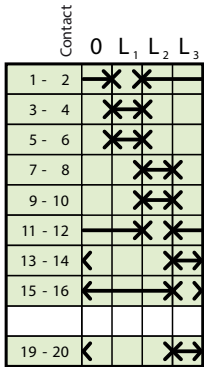
8102



8151



8157



8164

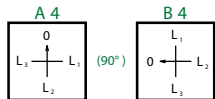
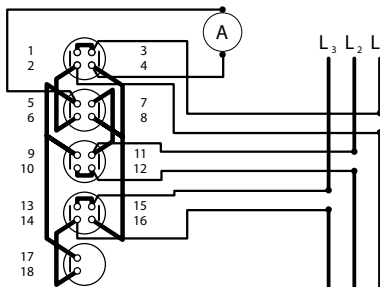
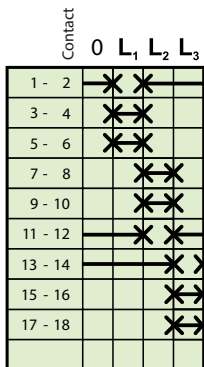


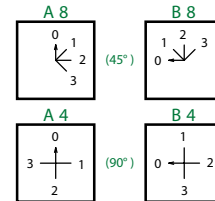
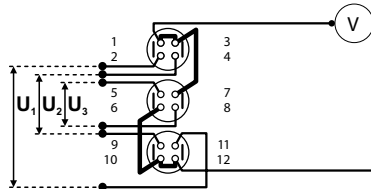


Diagram number

Identification on plate

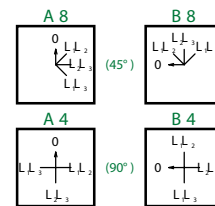
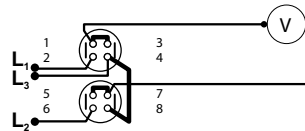
8256

Contact	0	1	2	3
1 - 2		X		
3 - 4			X	
5 - 6				X
7 - 8				X
9 - 10			X	
11 - 12	X			



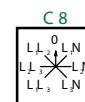
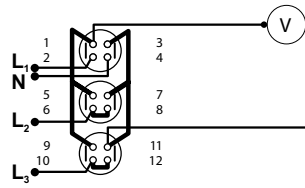
8351

Contact	0	L <sub>1</sub> L <sub>2</sub>	L <sub>2</sub> L <sub>3</sub>	L <sub>1</sub> L <sub>3</sub>
1 - 2		X		X
3 - 4			X	
5 - 6		X	X	
7 - 8				X



8357

Contact	L <sub>1</sub> L <sub>3</sub>	L <sub>2</sub> L <sub>3</sub>	L <sub>1</sub> L <sub>2</sub>	0	L <sub>1</sub> N	L <sub>2</sub> N	L <sub>3</sub> N
1 - 2	X		X		X		
3 - 4					X	X	X
5 - 6		X				X	
7 - 8			X				
9 - 10							X
11 - 12	X	X					



8359

Contact	L <sub>1</sub> L <sub>3</sub>	L <sub>2</sub> L <sub>3</sub>	L <sub>1</sub> L <sub>2</sub>	0	L <sub>1</sub> L <sub>2</sub>	L <sub>2</sub> L <sub>3</sub>	L <sub>1</sub> L <sub>3</sub>
1 - 2	X		X				
3 - 4					X		X
5 - 6		X					
7 - 8						X	
9 - 10			X				
11 - 12					X		
13 - 14	X	X					
15 - 16						X	X

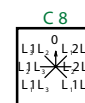
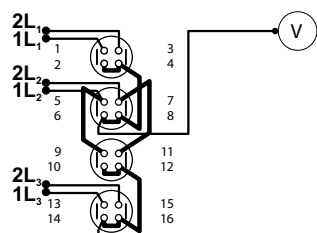
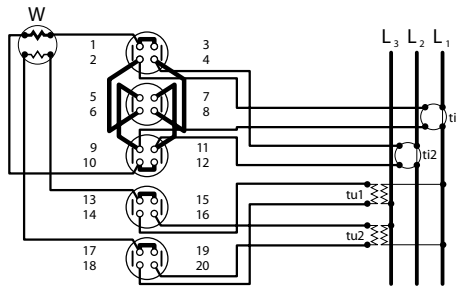


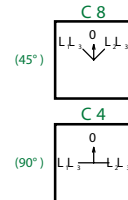
Diagram number

8453

		Contact		
		L <sub>1</sub> L <sub>3</sub>	0	L <sub>2</sub> L <sub>3</sub>
1 - 2		*	*	
3 - 4		*	*	*
5 - 6		*	*	*
7 - 8		*	*	*
9 - 10		*	*	*
11 - 12		*	*	*
13 - 14		*	*	*
15 - 16		*	*	*
17 - 18		*	*	*
19 - 20		*	*	*

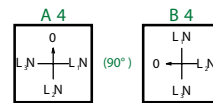
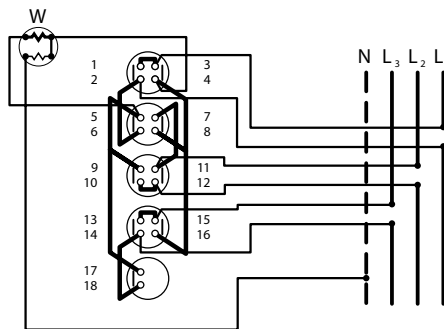


Identification on plate



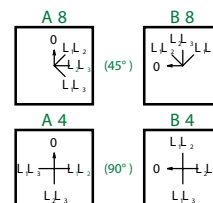
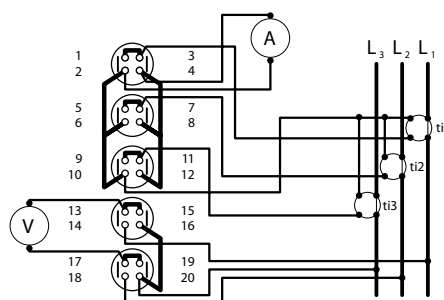
8551

		Contact			
		0	N	N	N
1 - 2		*	*	*	*
3 - 4		*	*	*	*
5 - 6		*	*	*	*
7 - 8		*	*	*	*
9 - 10		*	*	*	*
11 - 12		*	*	*	*
13 - 14		*	*	*	*
15 - 16		*	*	*	*
17 - 18		*	*	*	*



8752

		Contact			
		0	L <sub>1</sub> L <sub>2</sub>	L <sub>2</sub> L <sub>3</sub>	L <sub>1</sub> L <sub>3</sub>
1 - 2		*	*	*	*
3 - 4		*	*	*	*
5 - 6		*	*	*	*
7 - 8		*	*	*	*
9 - 10		*	*	*	*
11 - 12		*	*	*	*
13 - 14		*	*	*	*
15 - 16		*	*	*	*
17 - 18		*	*	*	*
19 - 20		*	*	*	*



# SWITCHES FOR ONE-PHASE MOTORS

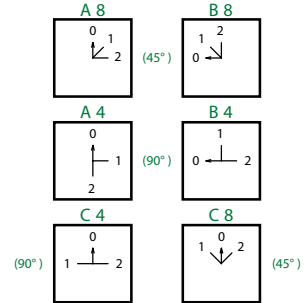
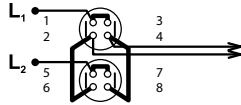


Diagram number

Identification on plate

9051

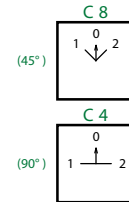
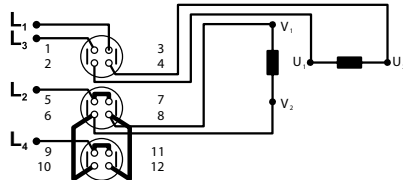
		Contact		0	1	2
1 - 2			X			
3 - 4					X	
5 - 6						X
7 - 8			X			



9101

		Contact		1	0	2
1 - 2		X			X	
3 - 4		X			X	
5 - 6						X
7 - 8		X				
9 - 10		X				
11 - 12						X

Reverse change-over switch



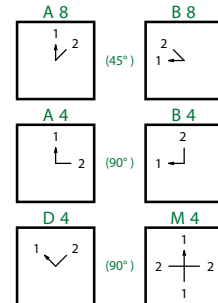
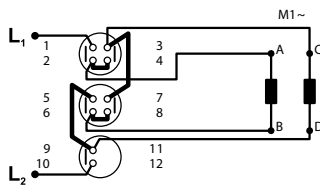
9256

		Contact		1	2
1 - 2		X	X		
3 - 4				X	
5 - 6				X	
7 - 8		X			
9 - 10		X	X		

POLOHA | CONNECTION

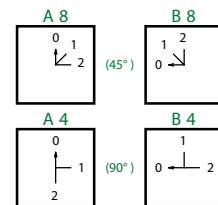
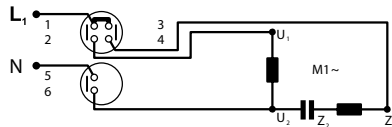
- 1 In-series winding (220 V)
- 2 In-parallel winding (110 V)

- 1 In-series winding (220 V)
- 2 In-parallel winding (110 V)



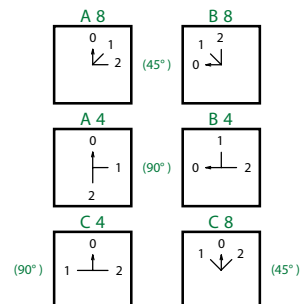
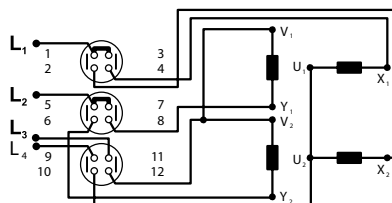
9455

		Contact		0	1	2
1 - 2			X	X		
3 - 4			X			
5 - 6			X	X		



9501

		Contact		0	1	2
1 - 2					X	
3 - 4			X			
5 - 6					X	
7 - 8			X			
9 - 10			X	X		
11 - 12			X	X		





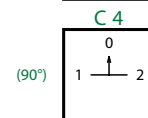
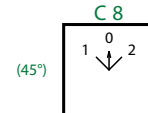
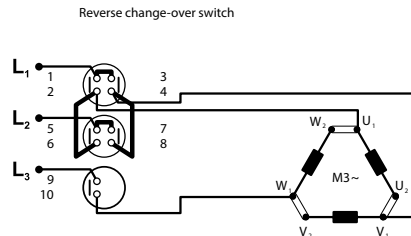
# SWITCHES FOR THREE-PHASE ASYNCHRONOUS MOTORS

Diagram number

Identification on plate

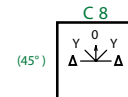
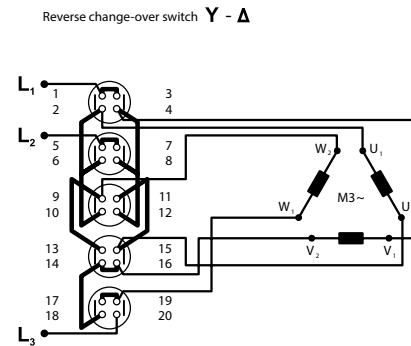
9151

Contact	1	0	2
1 - 2	X		
3 - 4			X
5 - 6			X
7 - 8	X		
9 - 10	X		X



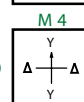
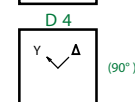
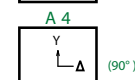
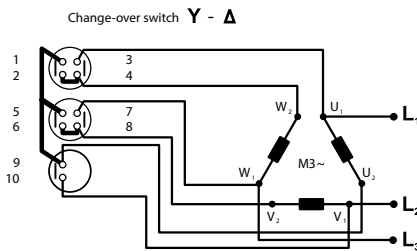
9153

Contact	$\Delta$	Y	0	Y	$\Delta$
1 - 2				X	X
3 - 4	X	X			
5 - 6	X	X			
7 - 8				X	X
9 - 10	X				X
11 - 12	X				X
13 - 14		X		X	
15 - 16		X		X	
17 - 18	X				X
19 - 20	X	X		X	X



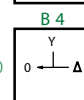
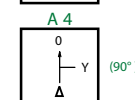
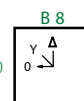
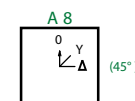
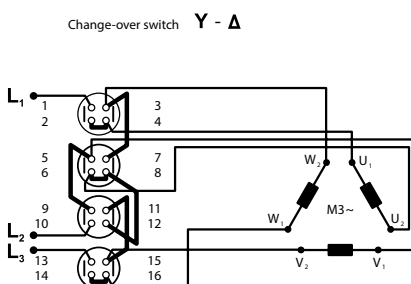
9352

Contact	Y	$\Delta$
1 - 2	X	
3 - 4		X
5 - 6	X	
7 - 8		X
9 - 10		X



9551

Contact	0	Y	$\Delta$
1 - 2		X	X
3 - 4			X
5 - 6			X
7 - 8	X		
9 - 10		X	X
11 - 12		X	
13 - 14		X	X
15 - 16			X



# SWITCHES FOR THREE-PHASE ASYNCHRONOUS MOTORS



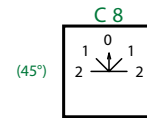
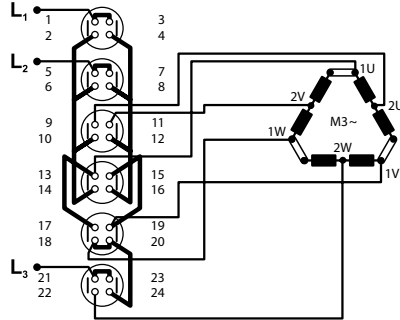
Diagram number

Identification on plate

9154

Contact	2	1	0	1	2
1 - 2				X	X
3 - 4	X	X			
5 - 6	X	X			
7 - 8				X	X
9 - 10	X				X
11 - 12	X				X
13 - 14		X		X	
15 - 16		X		X	
17 - 18	X				X
19 - 20	X				X
21 - 22	X				X
23 - 24		X		X	

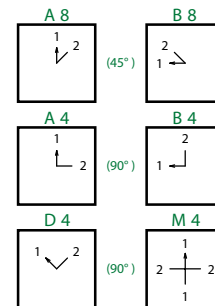
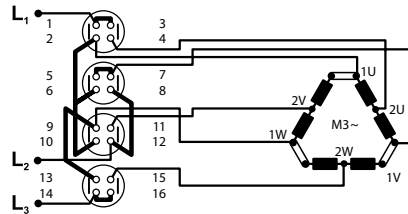
Pole reverse change-over switch (DAHLANDER)



9354

	1	2
1 - 2	X	
3 - 4		X
5 - 6		X
7 - 8	X	
9 - 10		X
11 - 12		X
13 - 14	X	
15 - 16		X

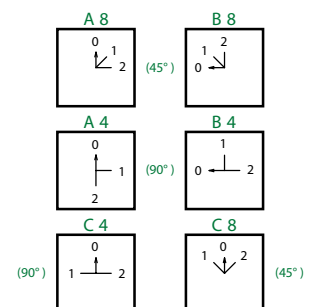
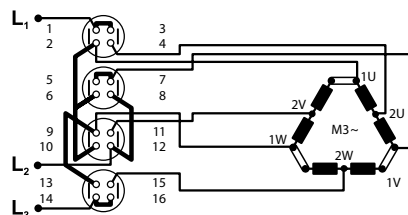
Pole change-over switch  $\Delta - \Upsilon$  (DAHLANDER)



9552

Contact	0	1	2
1 - 2		X	
3 - 4			X
5 - 6			X
7 - 8		X	
9 - 10			X
11 - 12			X
13 - 14		X	
15 - 16			X

Pole change-over switch  $\Delta - \Upsilon$  (DAHLANDER)



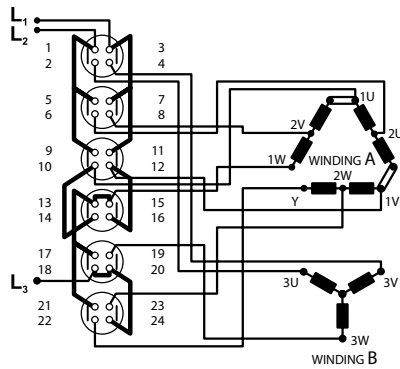
# SWITCHES FOR THREE-PHASE ASYNCHRONOUS MOTORS

Diagram number

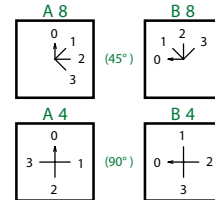
9554

Contact	0	1	2	3
1 - 2				X
3 - 4				X
5 - 6			X	
7 - 8			X	
9 - 10	X			
11 - 12	X			
13 - 14			X	
15 - 16			X	
17 - 18		X		
19 - 20				X
21 - 22		X	X	
23 - 24			X	

Pole change-over switch (O- $\Delta_A$ - $Y_A$ - $Y_B$ )



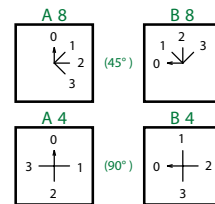
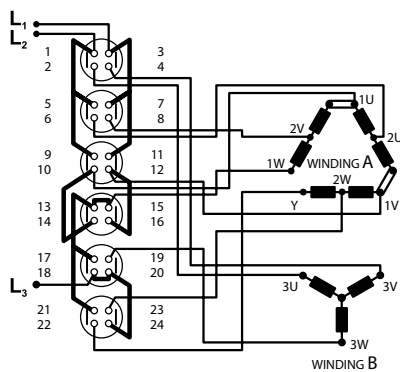
Identification on plate



9555

Contact	0	1	2	3
1 - 2				X
3 - 4			X	
5 - 6				X
7 - 8				X
9 - 10	X			
11 - 12	X			
13 - 14				X
15 - 16				X
17 - 18		X		
19 - 20			X	
21 - 22		X	X	
23 - 24			X	X

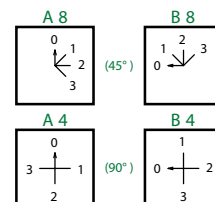
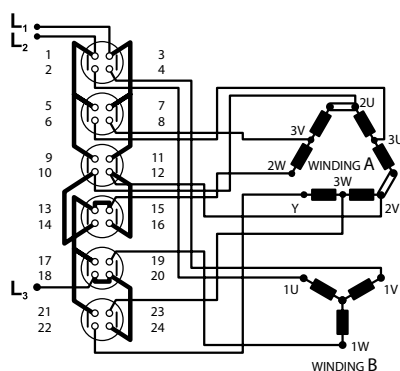
Pole change-over switch (O- $\Delta_A$ - $Y_B$ - $Y_A$ )



9556

Contact	0	1	2	3
1 - 2		X		
3 - 4		X		
5 - 6				X
7 - 8				X
9 - 10			X	
11 - 12			X	
13 - 14				X
15 - 16				X
17 - 18		X		
19 - 20		X		
21 - 22			X	X
23 - 24			X	X

Pole change-over switch (O- $Y_B$ - $\Delta_A$ - $Y_A$ )



# SWITCHES FOR THREE-PHASE ASYNCHRONOUS MOTORS

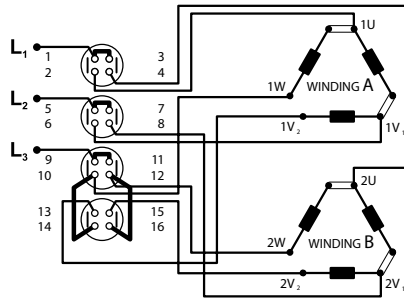


Diagram number

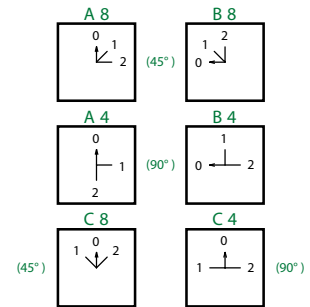
9553

Contact	0	1	2
1 - 2		X	
3 - 4			X
5 - 6		X	
7 - 8			X
9 - 10		X	
11 - 12			X
13 - 14		X	
15 - 16			X

Pole change-over switch 2 separate windings



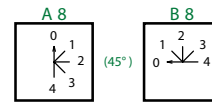
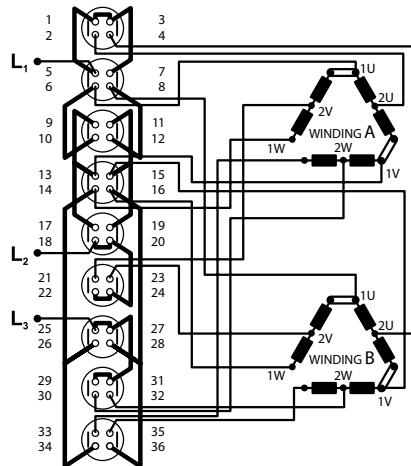
Identification on plate



9557

Contact	0	1	2	3	4
1 - 2				X	
3 - 4					X
5 - 6		X			
7 - 8			X		
9 - 10				X	
11 - 12					X
13 - 14				X	
15 - 16					X
17 - 18		X			
19 - 20			X		
21 - 22				X	
23 - 24					X
25 - 26		X			
27 - 28			X		
29 - 30				X	
31 - 32					X
33 - 34		X	X		
35 - 36			X	X	

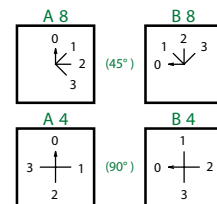
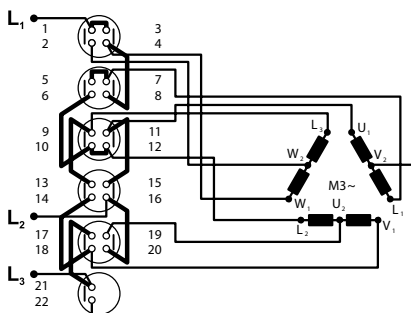
Pole change-over switch ( $\Delta_A - \Delta_B - Y_A - Y_B$ )



9567

Contact	0	1	2	3
1 - 2				X
3 - 4		X	X	
5 - 6		X	X	
7 - 8		X	X	
9 - 10		X	X	
11 - 12		X	X	
13 - 14		X	X	
15 - 16		X	X	
17 - 18		X	X	
19 - 20		X	X	
21 - 22				X

Pole change-over switch ( $O - Y - \Delta - Y$ )





Issued 01/2026, subject to change

**OBZOR, Production Cooperative Zlin**

Na Slanici 378  
763 02 Zlin  
Czech Republic

+420 577 195 138  
+420 734 258 046  
export@obzor.cz

[www.obzorzlin.com](http://www.obzorzlin.com)

